



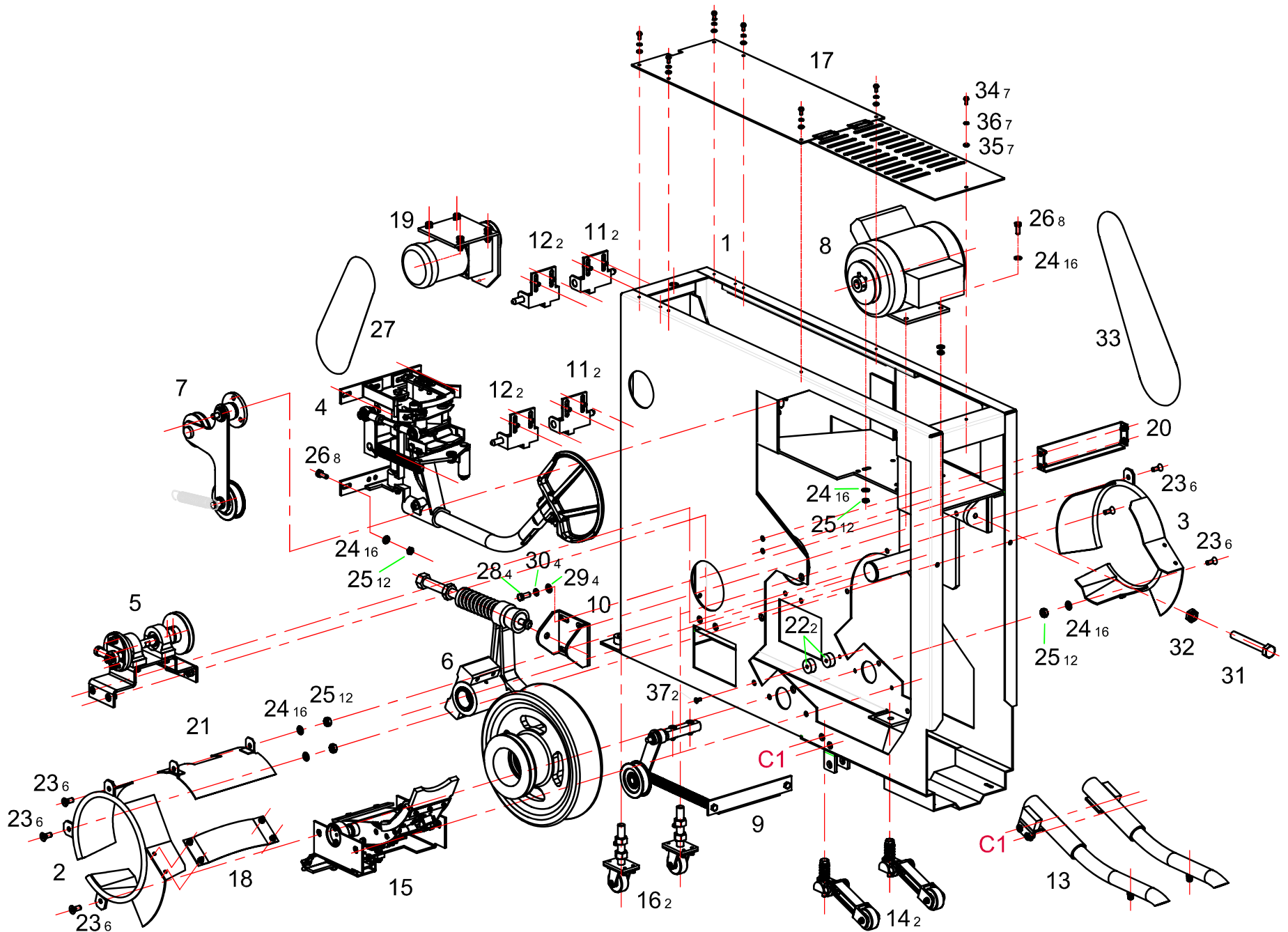
VIA FASTRACK KATALOG CZĘŚCI



VIA
BOWLING



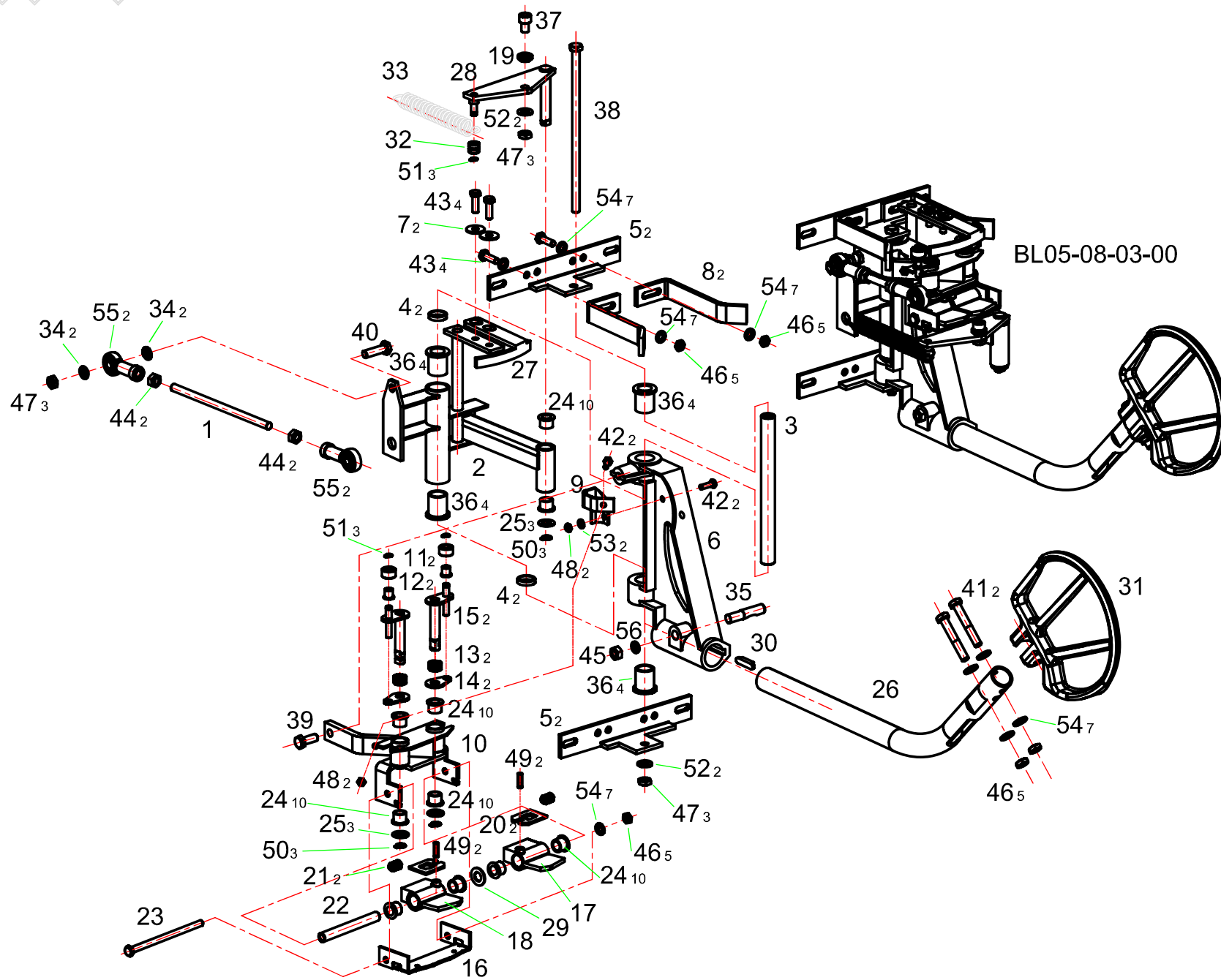
| | | |
|--------------------------------------|---------------------------|------|
| FASTRAK BALL RETURN | BL05-08-00B | 1, 2 |
| BALL SENSOR ASSEMBLY | BL05-08-03-00A | 3, 4 |
| PADDLE ASSEMBLY | BL05-08-04A-00 | 5, 6 |
| ACCELARATOR ASSEMBLY | BL05-08-05-00 | 7, 8 |
| DOUBLE TENSIONER ASSEMBLY | BL05-08-06A-00 | 9 |
| MOTOR ASSEMBLY | BL05-08-10-00 | 10 |
| TENSIONER II | BL05-08-11-00 | 11 |
| BOLT ASSEMBLY | BL05-08-13/14-00 | 12 |
| TRACK RAIL ASSEMBLY | BL05-08-15-00 | 13 |
| ROLLER ASSEMBLY | BL05-08-16-00 | 14 |
| BALL SUPPORT BAFFLE ASSEMBLY | BL05-08-17-00 | 15 |
| SPRING BRACKET ASSEMBLY | BL05-08-17-05-00 | 16 |
| LOCK ASSEMBLY | BL05-08-17-06-00 | 17 |
| SWITCH ASSEMBLY I | BL05-08-17-07-00 | 18 |
| BALL SUPPORT PANEL ASSEMBLY | BL05-08-17-08-00 | 19 |
| SWITCH ASSEMBLY II | BL05-08-17-09-00 | 20 |
| ACTIVE ROLLER ASSEMBLY | BL05-08-18-00 | 21 |
| CAP/BAFFLE/STRENGTHEN PANEL ASSEMBLY | BL05-08-19/20/22-00 | 22 |
| GEAR BOX ASSEMBLY | BL05-08-21-00A | 23 |
| INDEX | | 24 |



| ITEM | CATALOG | DESCRIPTION |
|------|------------------|---------------------------|
| 1 | BL05-08-01-00A | BRACKET WELDMENT |
| 2 | BL05-08-02-00A | BALL SUPPORT A |
| 3 | BL05-08-02-00B | BALL SUPPORT B |
| 4 | BL05-08-03-00A | BALL SENSOR ASSEMBLY |
| 5 | BL05-08-04A-00 | PADDLE ASSEMBLY |
| 6 | BL05-08-05-00 | ACCELARATOR ASSEMBLY |
| 7 | BL05-08-06A-00 | DOUBLE TENSIONER ASSEMBLY |
| 8 | BL05-08-10-00 | MOTOR ASSEMBLY |
| 9 | BL05-08-11-00 | TENSIONER II |
| 10 | BL05-08-12-00 | LEVER SUPPORT |
| 11 | BL05-08-13-00 | BOLT ASSEMBLY I |
| 12 | BL05-08-14-00 | BOLT ASSEMBLY II |
| 13 | BL05-08-15-00 | TRACK RAIL ASSEMBLY |
| 14 | BL05-08-16-00 | ROLLER ASSEMBLY |
| 15 | BL05-08-17-00 | BALL SUPPORT BAFFLE ASS. |
| 16 | BL05-08-18-00 | ACTIVE ROLLER ASSEMBLY |
| 17 | BL05-08-19-00 | CAP ASSEMBLY |
| 18 | BL05-08-20-00 | BAFFLE ASSEMBLY |
| 19 | BL05-08-21-00A | GEAR BOX ASSEMBLY |
| 20 | BL05-08-22-00 | STRENGTHEN PANEL ASS. |
| 21 | BL05-08-23-00 | SAFEGUARD WELDMENT |
| 22 | BL05-08-24-00A | BUMPER ASSEMBLY |
| 23 | GB2673-86 M8× 20 | FLAT SOCKET CAP SCREW |
| 24 | GB97.1-85 8 | WASHER |
| 25 | GB6184-86 M8 | LOCKNUT |
| 26 | GB5783-86 M8× 25 | HEX HEAD SCREW |

| ITEM | CATALOG | DESCRIPTION |
|------|-------------------|-----------------------|
| 27 | GB11544-89 Z49" | "V" BELT(Z) |
| 28 | GB5783-86 M10× 20 | HEX HEAD SCREW |
| 29 | GB97.1-85 10 | WASHER |
| 30 | GB93-87 10 | SPRING WASHER |
| 31 | GB5782-86 M10× 50 | HEX HEAD SCREW |
| 32 | GB6170-86 M10 | NUT |
| 33 | GB11544-89 A50" | "V" BELT(A) |
| 34 | GB823-88 M4× 12 | PAN HEAD SCREW |
| 35 | GB848-85 4 | WASHER |
| 36 | GB93-87 4 | SPRING WASHER |
| 37 | GB2673-86 M6× 10 | FLAT SOCKET CAP SCREW |
| 38 | | |
| 39 | | |
| 40 | | |
| 41 | | |
| 42 | | |
| 43 | | |
| 44 | | |
| 45 | | |
| 46 | | |
| 47 | | |
| 48 | | |
| 49 | | |
| 50 | | |
| 51 | | |
| 52 | | |



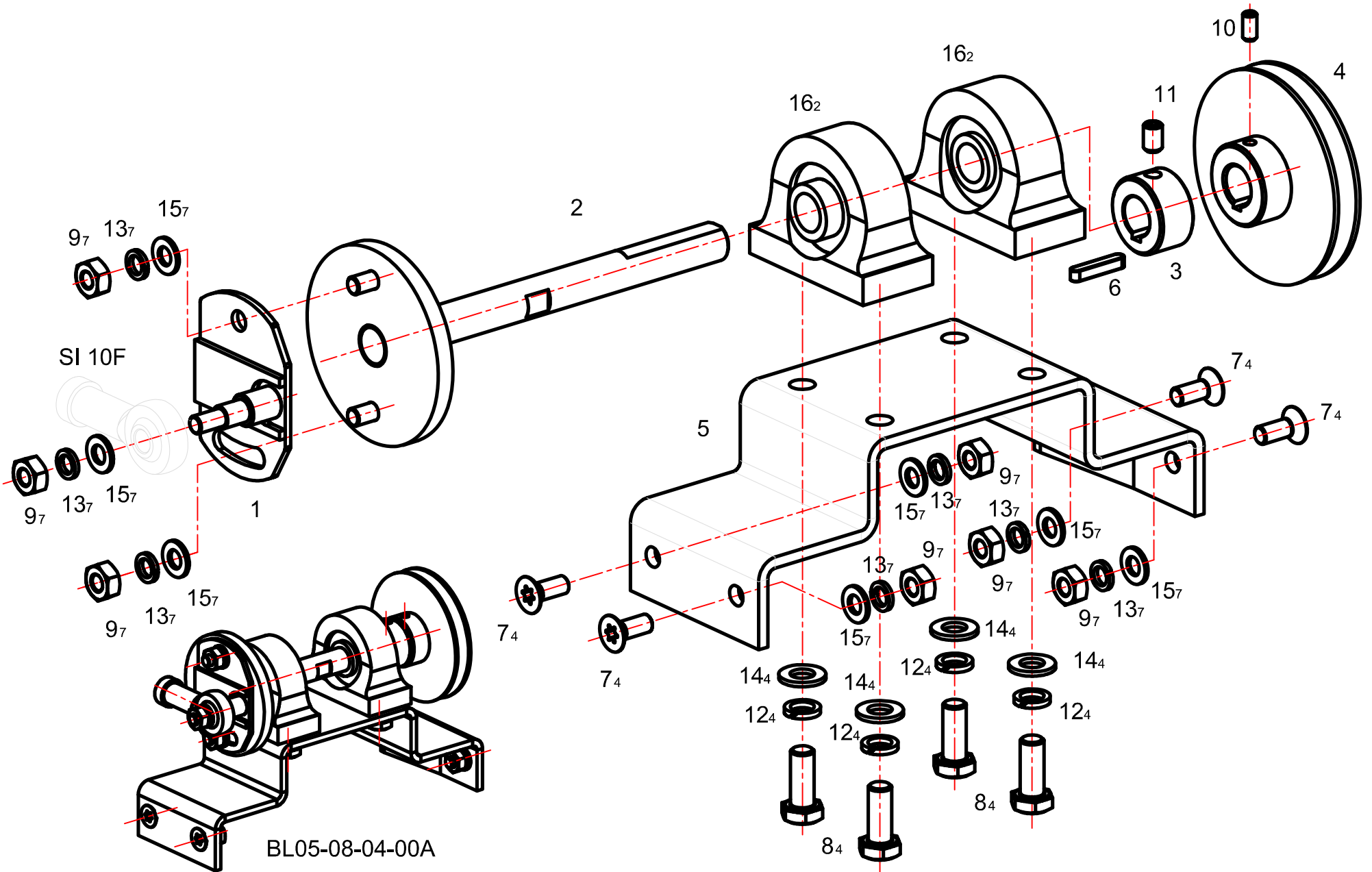


| ITEM | CATALOG | DESCRIPTION |
|------|-------------------|--------------------------|
| 1 | BL05-08-03-01 | ROD |
| 2 | BL03-08-18-02-00 | RUDDER DRIVE WELDMENT |
| 3 | BL02A-08-18-03 | SHAFT RUDDER |
| 4 | BL02A-08-18-04 | WASHER |
| 5 | BL05-08-03-05A | RUDDER ARM SUPPORT |
| 6 | BL03-08-18-06 | RUDDER ARM SUPPORT |
| 7 | Φ21×Φ8.5×2 | WASHER |
| 8 | BL02A-08-18-08 | TRIP ARM |
| 9 | BL02A-08-18-09 | STRENGTHEN PANEL |
| 10 | BL02A-08-18-10-00 | CAM SENSOR ASSEMBLY |
| 11 | BL02A-08-18-11 | ROLLER |
| 12 | BL02A-08-18-12 | FLANGE BEARING |
| 13 | BL02A-08-18-13 | SPRING |
| 14 | BL02A-08-18-14 | TAB II |
| 15 | BL02A-08-18-15-00 | TRIP ARM ASSEMBLY |
| 16 | BL02A-08-18-16 | CAM |
| 17 | BL02A-08-18-17 | RUDDER CAM ASSEMBLY L.H. |
| 18 | BL02A-08-18-18 | RUDDER CAM ASSEMBLY R.H. |
| 19 | BL03-08-18-19 | WASHER PLAIN |
| 20 | BL02A-08-18-20 | TRIP FINGER |
| 21 | BL02A-08-18-21 | SPRING |
| 22 | BL02A-08-18-22 | SLEEVE |
| 23 | GB5782-86 M8× 140 | HEX HEAD SCREW |
| 24 | BL02A-08-18-24 | FLANGE BEARING |
| 25 | BL02A-08-18-25 | WASHER |
| 26 | BL05-08-03-26 | RUDDER ARM |
| 27 | BL02A-08-18-27 | CAM WELDMENT |
| 28 | BL02A-08-18-28-00 | LINK WELDMENT |

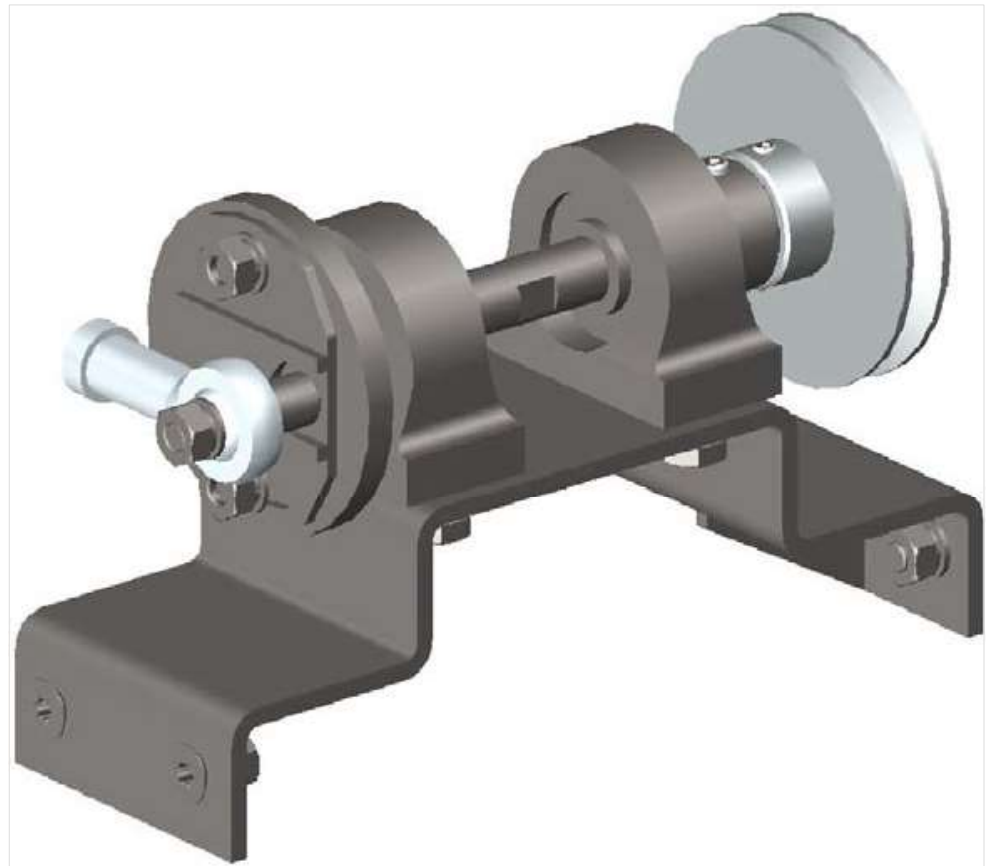
| ITEM | CATALOG | DESCRIPTION |
|------|--------------------|------------------------|
| 29 | BL02A-08-18-29 | WASHER SPACER |
| 30 | BL02A-08-18-30 | KEY |
| 31 | BL02A-08-18-31 | PADDLE |
| 32 | BL02A-08-17-13 | ROLLER II |
| 33 | BL02A-08-18-33 | SPRING |
| 34 | BL02A-08-18-34 | UNIBALL BEARING WASHER |
| 35 | BL03-08-18-35 | CLAMP STUD |
| 36 | BL02A-08-18-36 | FLANGE BEARING |
| 37 | CF10K | CAM FOLLOWER |
| 38 | GB5782-86 M10× 240 | HEX HEAD SCREW |
| 39 | GB5783-86 M10× 25 | HEX HEAD SCREW |
| 40 | GB5783-86 M10× 35 | HEX HEAD SCREW |
| 41 | GB5782-86 M8× 60 | HEX HEAD SCREW |
| 42 | GB5783-86 M6× 20 | HEX HEAD SCREW |
| 43 | GB5783-86 M8× 25 | HEX HEAD SCREW |
| 44 | GB6170-86 M10 | NUT |
| 45 | GB6170-86 M12 | NUT |
| 46 | GB6184-86 M8 | LOCKNUT |
| 47 | GB6184-86 M10 | LOCKNUT |
| 48 | GB6184-86 M6 | LOCKNUT |
| 49 | GB879-86 Φ6×20 | ROLL PIN |
| 50 | GB894.1-86 12 | RETAINING RING |
| 51 | GB894.1-86 8 | RETAINING RING |
| 52 | GB97.1-85 10 | WASHER |
| 53 | GB97.1-85 6 | WASHER |
| 54 | GB97.1-85 8 | WASHER |
| 55 | SI10F | ROD END |
| 56 | GB97.1-85 12 | WASHER |

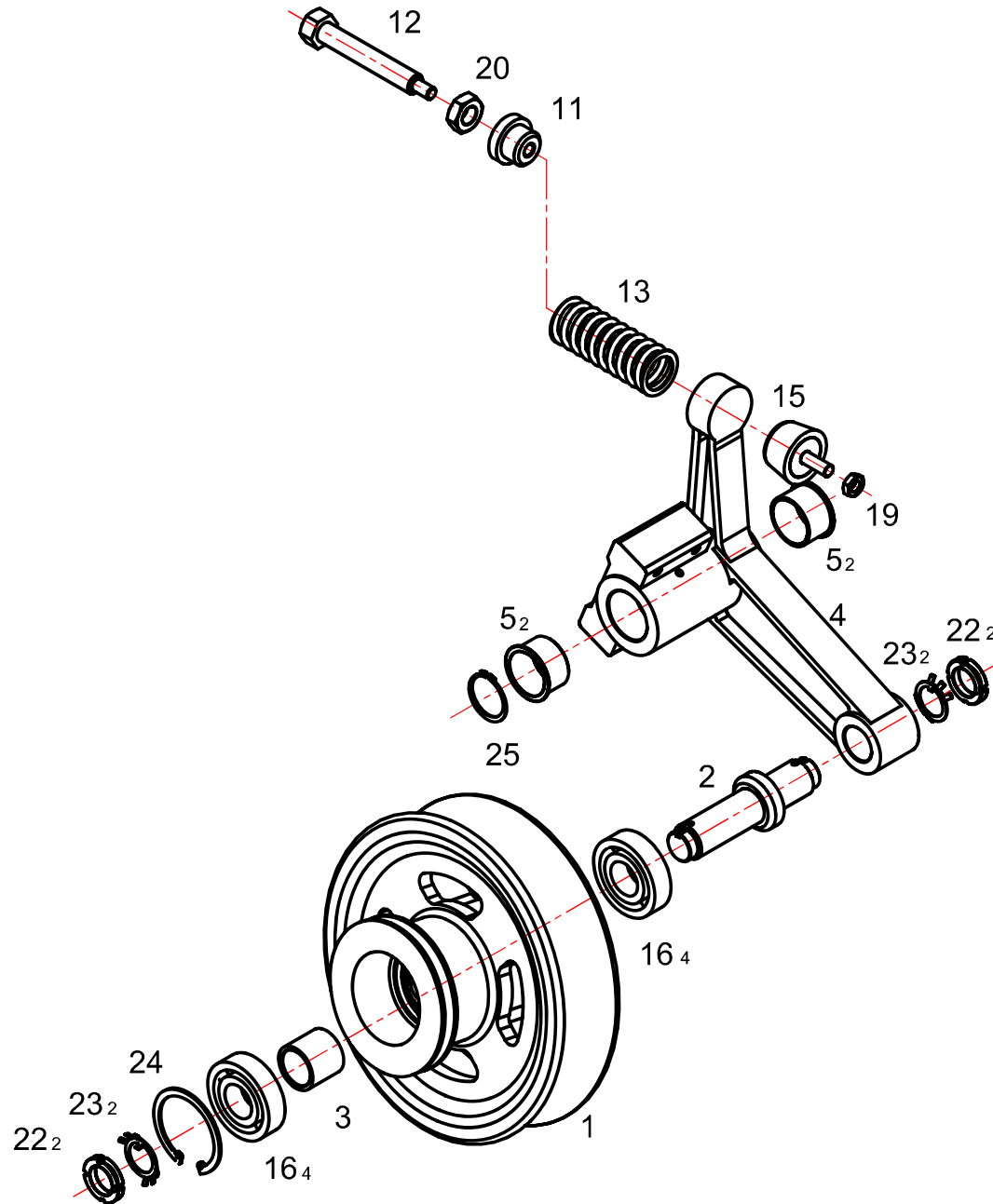
BALL SENSOR ASSEMBLY BL05-08-03-00A





| ITEM | CATALOG | DESCRIPTION |
|------|-------------------|---------------------------------|
| 1 | BL05-08-04A-01-00 | CRANK ADJUSTMENT PLATE WELDMENT |
| 2 | BL05-08-04A-02-00 | CRANK SHAFT WELDMENT |
| 3 | BL05-08-04A-03 | FIXED RING |
| 4 | BL05-08-04A-04 | PULLEY |
| 5 | BL05-08-04A-05-00 | BRACKET WELDMENT |
| 6 | GB1096-79 5× 28 | KEY |
| 7 | GB2673-86 M8× 20 | FLAT SOCKET CAP SCREW |
| 8 | GB5782-86 M10× 25 | HEX DEAD SCREW |
| 9 | GB6184-86 M8 | LOCKNUT |
| 10 | GB77-85 M6× 12 | SOCKET HEAD CAP SCREW |
| 11 | GB77-85 M8× 10 | SOCKET HEAD CAP SCREW |
| 12 | GB93-87 10 | SPRING WASHER |
| 13 | GB93-87 8 | SPRING WASHER |
| 14 | GB97.1-85 10 | WASHER |
| 15 | GB97.1-85 8 | WASHER |
| 16 | PA203 | BRACKET WITH BEARING |





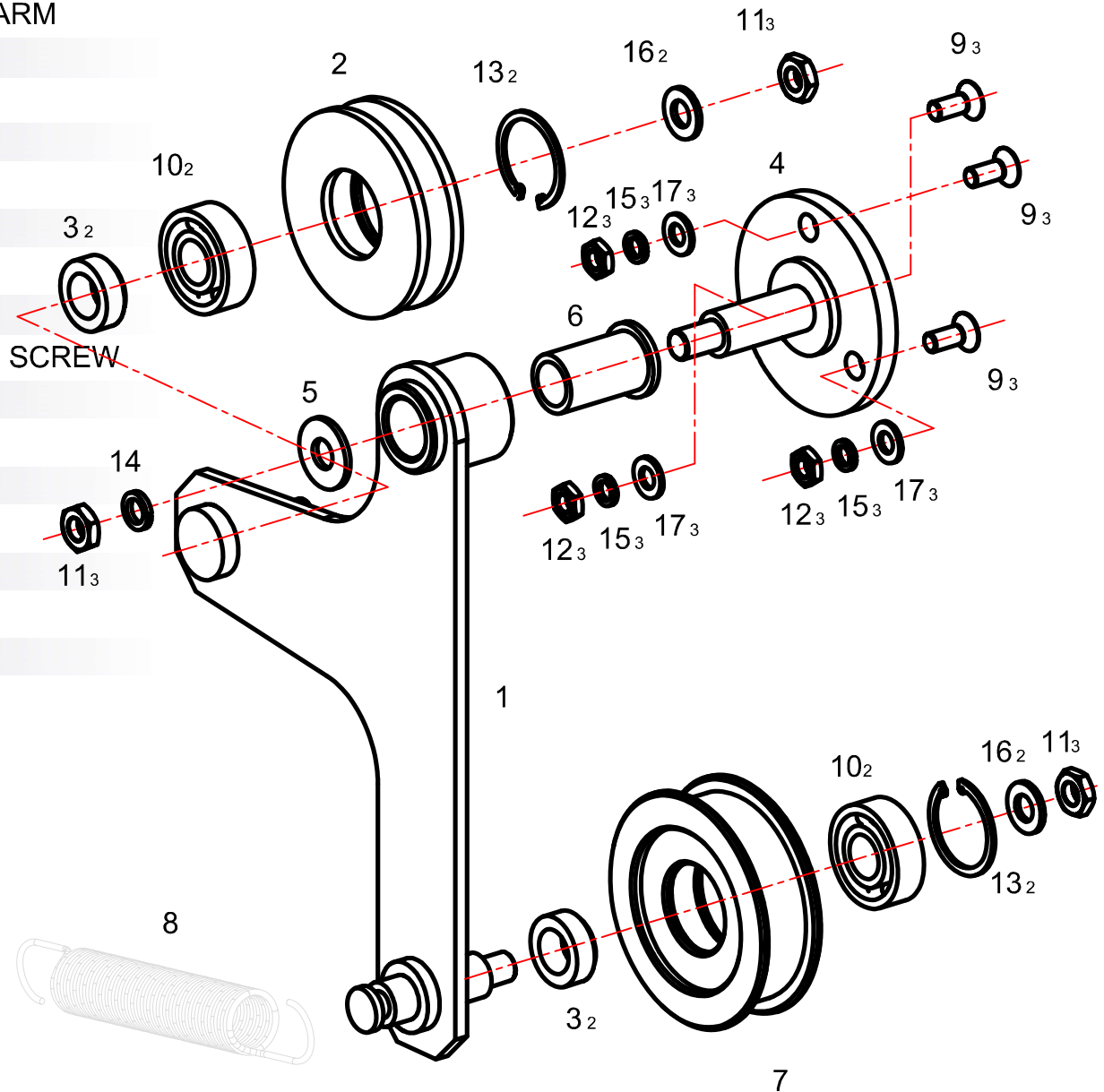
| ITEM | CATALOG | DESCRIPTION |
|------|----------------------|------------------------|
| 1 | BL05-08-05-01-01-00A | ACCELARATION DRIVER |
| 2 | BL05-08-05-01-02 | SHAFT |
| 3 | BL05-08-05-01-03 | SHAFT SLEEVE |
| 4 | BL05-08-05-02 | ARM |
| 5 | BL05-08-05-03 | BEARING SLEEVE |
| 6 | BL05-08-05-05 | SHAFT SLEEVE |
| 7 | BL05-08-05-06 | WHEEL SUPPORT ASSEMBLY |
| 8 | BL05-08-05-07 | SPRING |
| 9 | BL05-08-05-09 | RUBBER BLOCK |
| 10 | GB6170-86 M12 | NUT |
| 11 | GB6170-86 M20 | NUT |
| 12 | GB810-88 M30× 1.5 | NUT |
| 13 | GB858-88 30 | WASHER |
| 14 | GB893.1-86 80 | INTERNAL RING |
| 15 | GB894.1-86 45 | EXTERNAL RING |
| | | |
| | | |
| | | |
| | | |
| | | |
| | | |
| | | |
| | | |



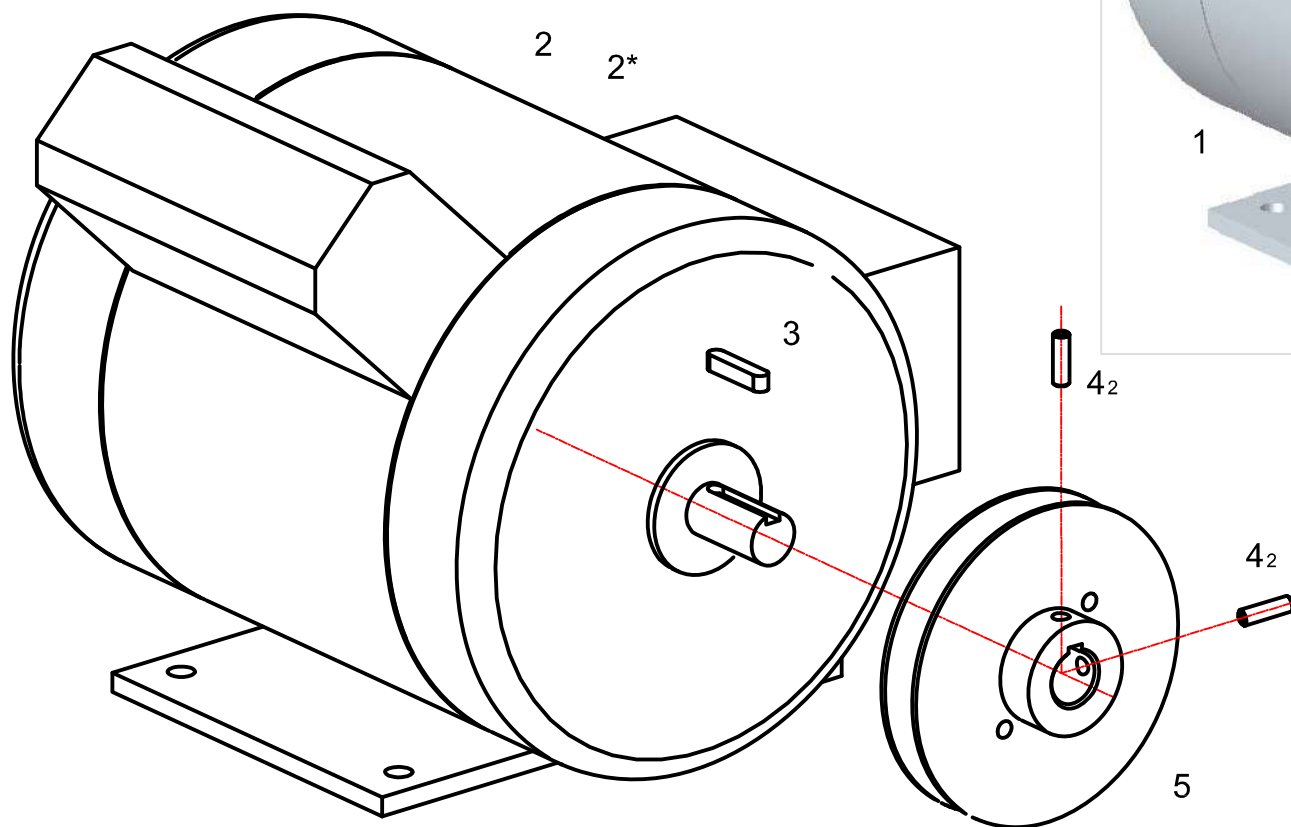
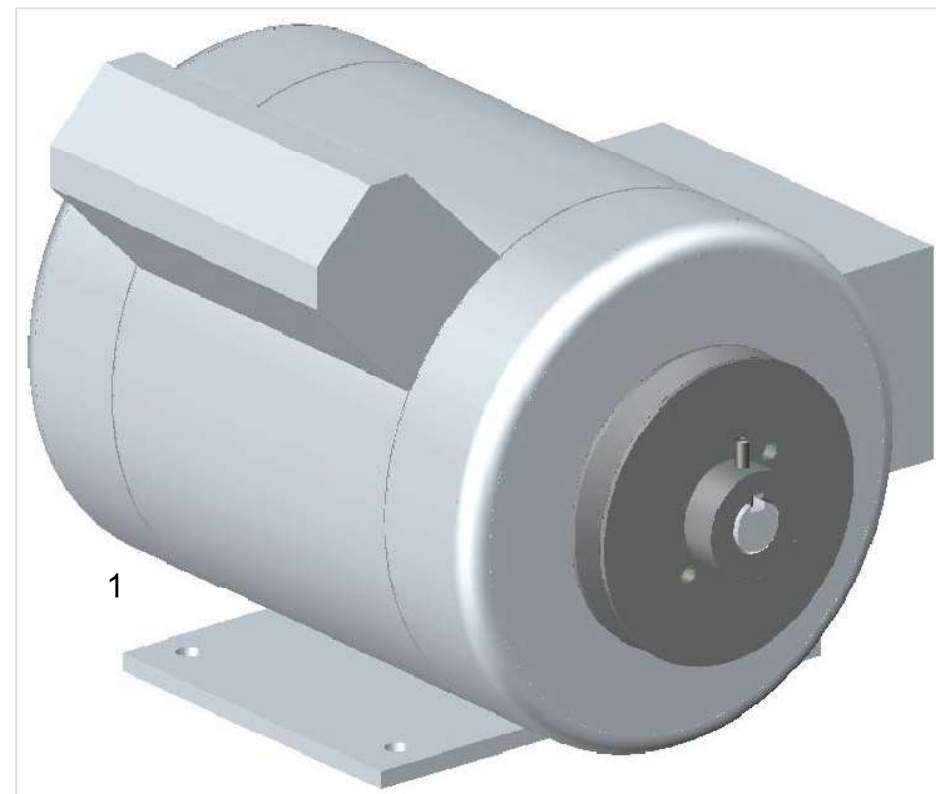
ACCELARATOR ASSEMBLY BL05-08-05-00



| ITEM | CATALOG | DESCRIPTION |
|------|-------------------|-----------------------|
| 1 | BL05-08-06A-01-00 | BELT TIGHTENER ARM |
| 2 | BL05-08-06-02 | TENSIONER |
| 3 | BL05-08-06-03 | FLANGE BEARING |
| 4 | BL05-08-06-04 | FIXED PLATE |
| 5 | BL05-08-06-05 | WASHER |
| 6 | BL05-08-06-06 | FLANGE BEARING |
| 7 | BL05-08-06-07 | TENSIONER |
| 8 | BL05-08-06-08 | SPRING |
| 9 | GB2673-86 M8×20 | FLAT SOCKET CAP SCREW |
| 10 | GB278-82 6202ZZ | BEARING |
| 11 | GB6184-86 M10 | LOCKNUT |
| 12 | GB6184-86 M8 | LOCKNUT |
| 13 | GB893.1-86 35 | INTERNAL RING |
| 14 | GB93-87 10 | WASHER |
| 15 | GB93-87 8 | WASHER |
| 16 | GB97.1-85 10 | WASHER |
| 17 | GB97.1-85 8 | WASHER |



| ITEM | CATALOG | DESCRIPTION |
|------|-----------------|-----------------------|
| 1 | BL05-08-10-00 | MOTOR ASSEMBLY |
| 2 | SSH-0554-1 | MOTOR 110V 60Hz |
| 2* | SSH-0554-2 | MOTOR 230V 50Hz |
| 3 | GB1096-79 5× 25 | KEY |
| 4 | GB77-85 M5× 16 | SOCKET HEAD CAP SCREW |
| 5 | BL05-08-10-01 | BELT PULLEY |

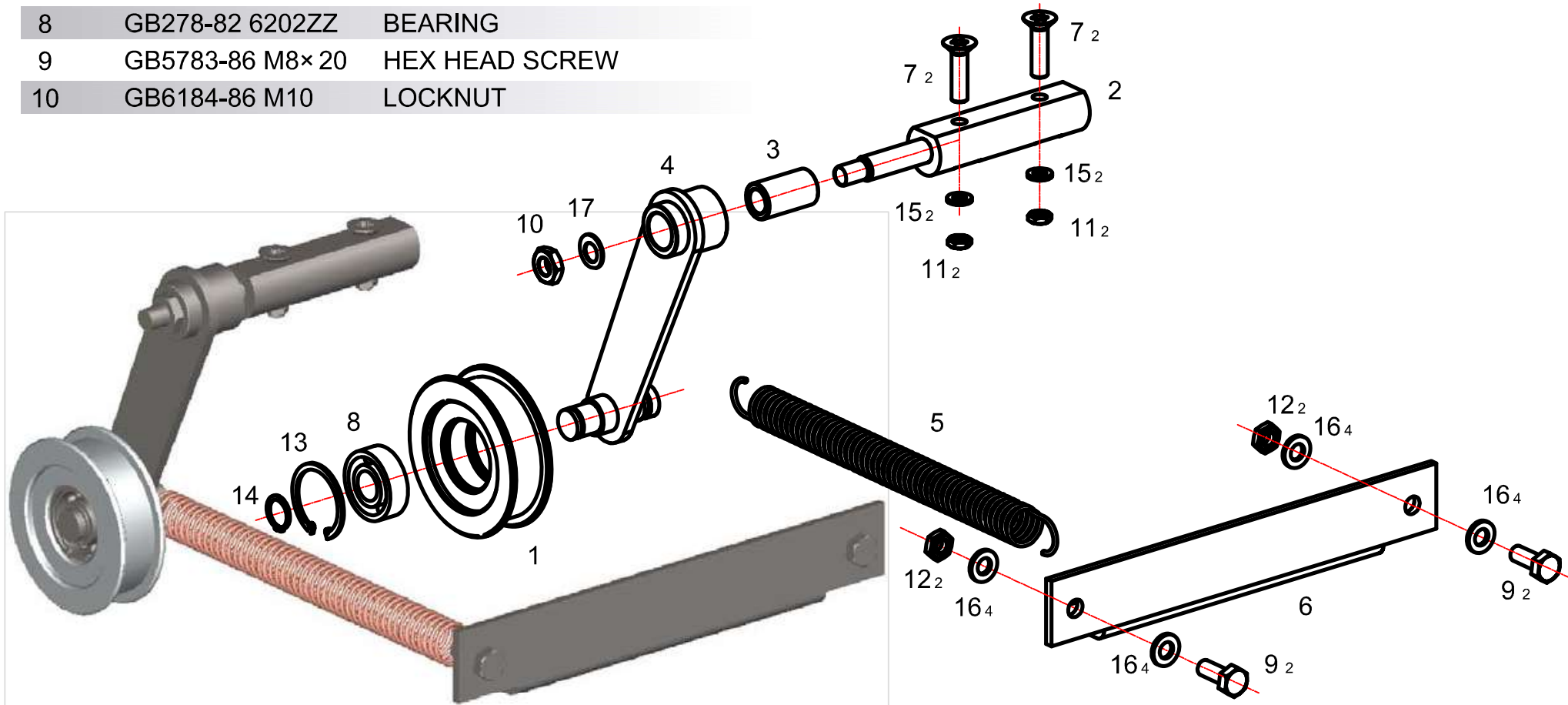


| MODEL | SSH-0554-1 | SSH-0554-2 |
|--------|------------|------------|
| OUTPUT | 0.55KW | |
| VOLT | 110V | 230V |
| AMPERE | 8.7A | 5.0A |
| FREQ. | 60Hz | 50Hz |
| POLE | 4 | |
| R.P.M. | 1740 | 1380 |
| INS.CL | B | |
| PHASE | 1 | |
| | PL 6204 | OPL 6203 |

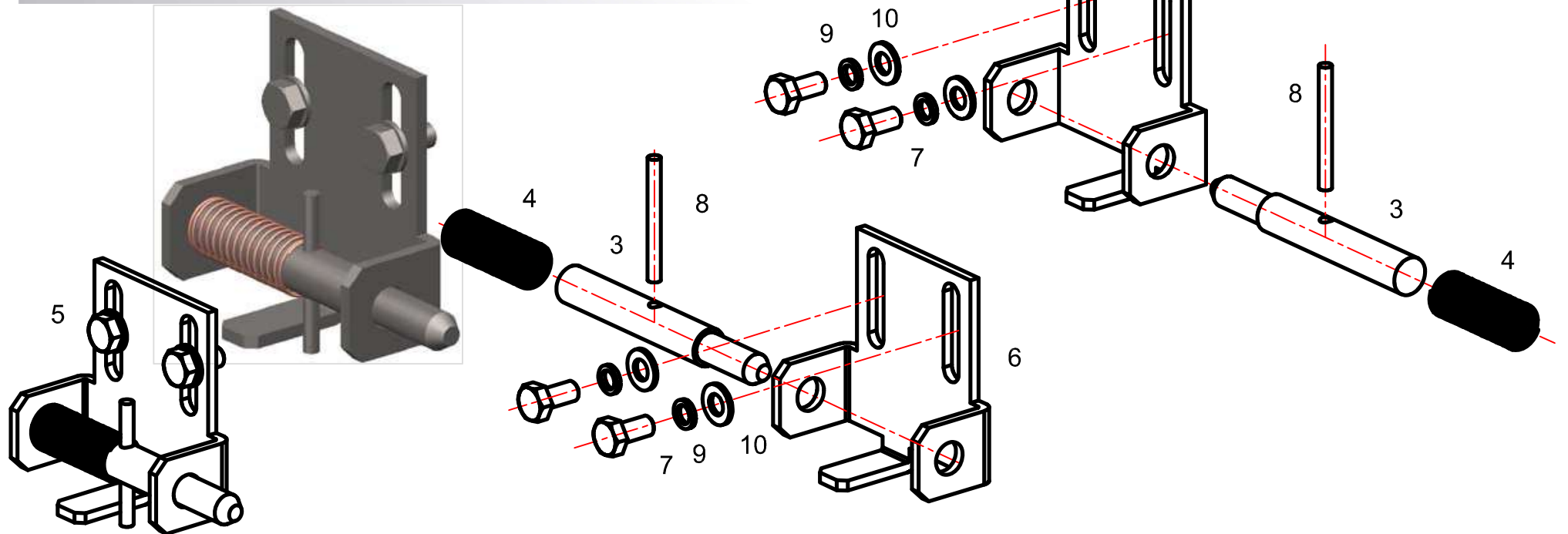
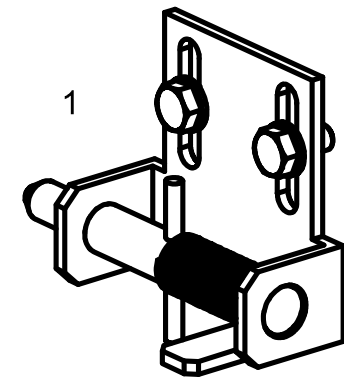
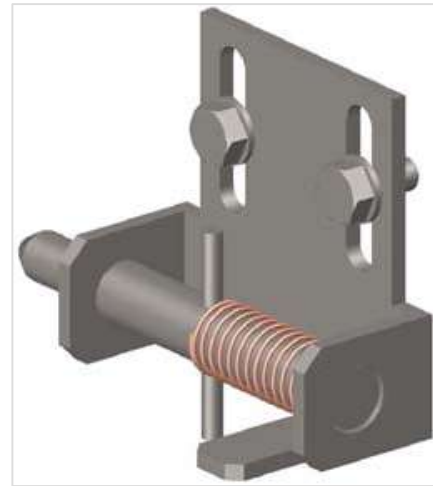


| ITEM | CATALOG | DESCRIPTION |
|------|------------------|-----------------------|
| 1 | BL05-08-06-07 | TENSIONER |
| 2 | BL05-08-11-01 | SHAFT |
| 3 | BL05-08-11-02 | BRONZE BUSH |
| 4 | BL05-08-11-03-00 | BELT TIGHTENER ARM |
| 5 | BL05-08-11-05 | SPRING |
| 6 | BL05-08-11-06 | SPRING HOOK |
| 7 | GB2673-86 M6×35 | FLAT SOCKET CAP SCREW |
| 8 | GB278-82 6202ZZ | BEARING |
| 9 | GB5783-86 M8×20 | HEX HEAD SCREW |
| 10 | GB6184-86 M10 | LOCKNUT |

| ITEM | CATALOG | DESCRIPTION |
|------|---------------|---------------|
| 11 | GB6184-86 M6 | LOCKNUT |
| 12 | GB6184-86 M8 | LOCKNUT |
| 13 | GB893.1-86 35 | INTERNAL RING |
| 14 | GB894.1-86 14 | EXTERNAL RING |
| 15 | GB97.1-85 6 | WASHER |
| 16 | GB97.1-85 8 | WASHER |
| 17 | GB97.1-85 10 | WASHER |



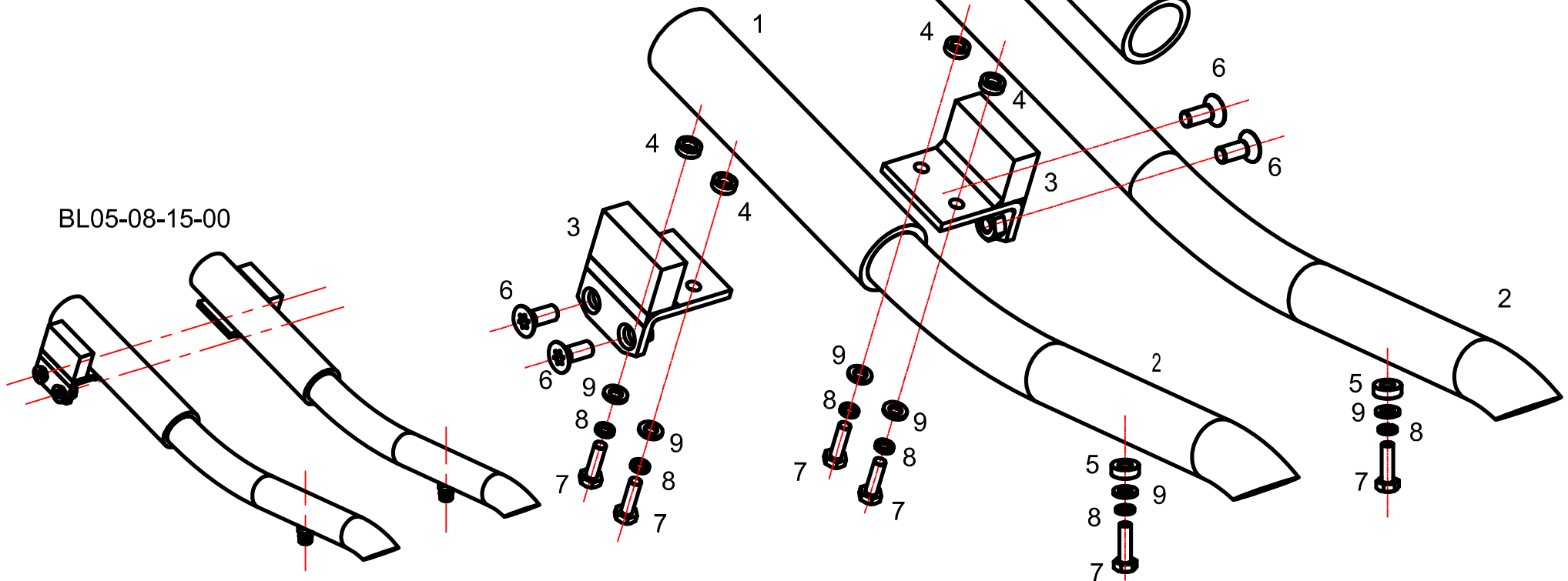
| ITEM | CATALOG | DESCRIPTION |
|------|------------------|--------------------------|
| 1 | BL05-08-13-00 | BOLT ASSEMBLY I |
| 2 | BL05-08-13-01 | BOLT BRACKET WELDMENT I |
| 3 | BL05-08-13-02 | BOLT |
| 4 | BL05-08-13-03 | SPRING |
| 5 | BL05-08-14-00 | BOLT ASSEMBLY II |
| 6 | BL05-08-14-01 | BOLT BRACKET WELDMENT II |
| 7 | GB5783-86 M8× 16 | HEX HEAD SCREW |
| 8 | GB879-86 Φ5×50 | ROLL PIN |
| 9 | GB93-87 8 | SPRING WASHER |
| 10 | GB97.1-85 8 | WASHER |



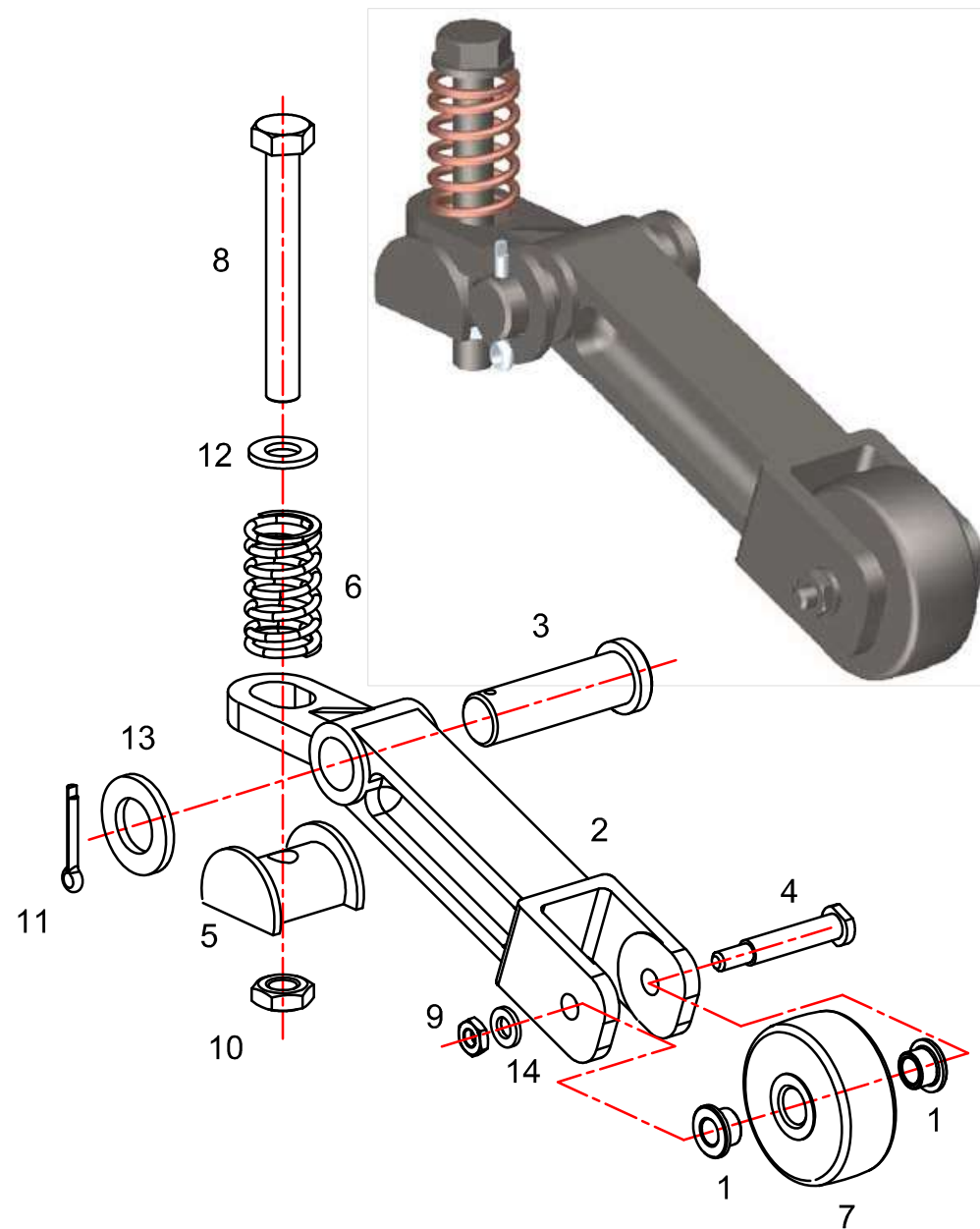
BOLT ASSEMBLY BL05-08-13-00 & BL05-08-14-00



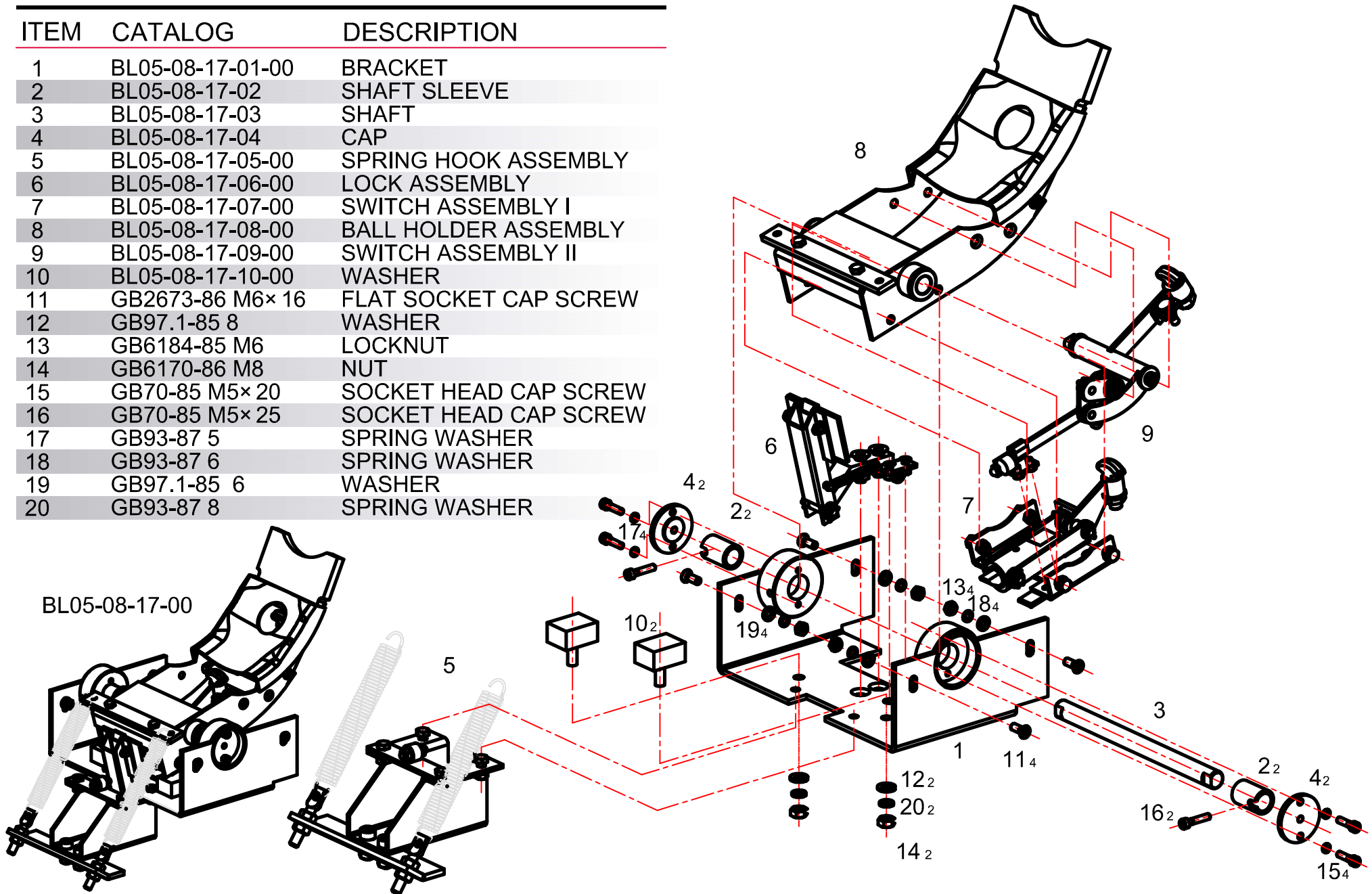
| ITEM | CATALOG | DESCRIPTION |
|------|------------------|-----------------------|
| 1 | BL05-08-15-01 | TRACK COVER |
| 2 | BL05-08-15-02 | TRACK RAIL WELDMENT |
| 3 | BL05-08-15-03-00 | TRACK RAIL SUPPORT |
| 4 | BL05-08-15-04 | WASHER |
| 5 | BL05-08-15-05 | WASHER |
| 6 | GB2673-86 M8× 20 | FLAT SOCKET CAP SCREW |
| 7 | GB5783-86 M6× 20 | HEX HEAD SCREW |
| 8 | GB93-87 6 | SPRING WASHER |
| 9 | GB96-85 6 | WASHER |



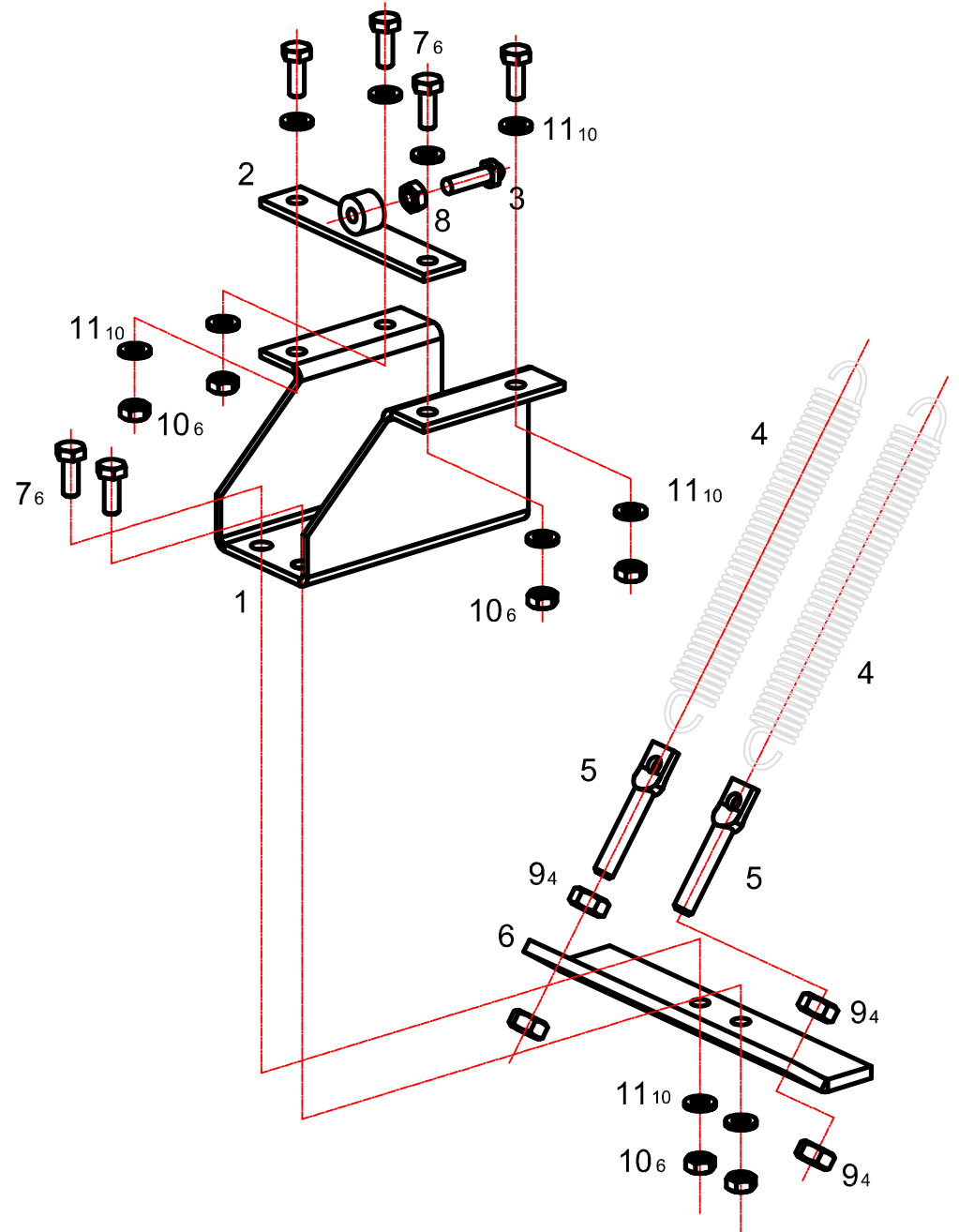
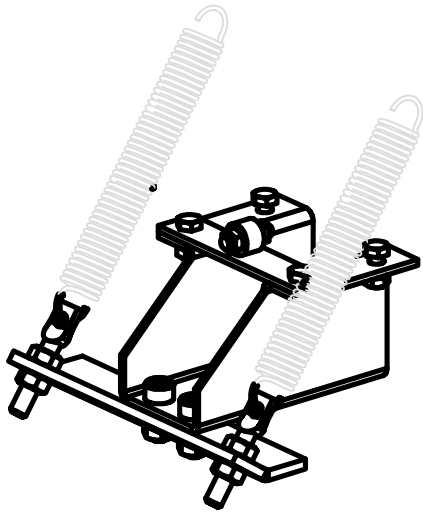
| ITEM | CATALOG | DESCRIPTION |
|------|------------------|------------------|
| 1 | BL03-04-25 | FLANGE BEARING |
| 2 | BL05-08-16-01 | IDLER PULLEY ARM |
| 3 | BL05-08-16-02 | SHAFT |
| 4 | BL05-08-16-03 | SHAFT |
| 5 | BL05-08-16-04 | SPECIAL NUT |
| 6 | BL05-08-16-05 | SPRING |
| 7 | BL05-08-16-06 | ROLLER |
| 8 | GB5782-86 M10×80 | HEX HEAD SCREW |
| 9 | GB6184-86 M6 | LOCKNUT |
| 10 | GB6184-86 M10 | LOCKNUT |
| 11 | GB91-86 Φ3.2×25 | PIN |
| 12 | GB97.1-85 10 | WASHER |
| 13 | GB97.1-85 16 | WASHER |
| 14 | GB97.1-85 6 | WASHER |



| ITEM | CATALOG | DESCRIPTION |
|------|------------------|-----------------------|
| 1 | BL05-08-17-01-00 | BRACKET |
| 2 | BL05-08-17-02 | SHAFT SLEEVE |
| 3 | BL05-08-17-03 | SHAFT |
| 4 | BL05-08-17-04 | CAP |
| 5 | BL05-08-17-05-00 | SPRING HOOK ASSEMBLY |
| 6 | BL05-08-17-06-00 | LOCK ASSEMBLY |
| 7 | BL05-08-17-07-00 | SWITCH ASSEMBLY I |
| 8 | BL05-08-17-08-00 | BALL HOLDER ASSEMBLY |
| 9 | BL05-08-17-09-00 | SWITCH ASSEMBLY II |
| 10 | BL05-08-17-10-00 | WASHER |
| 11 | GB2673-86 M6× 16 | FLAT SOCKET CAP SCREW |
| 12 | GB97.1-85 8 | WASHER |
| 13 | GB6184-85 M6 | LOCKNUT |
| 14 | GB6170-86 M8 | NUT |
| 15 | GB70-85 M5× 20 | SOCKET HEAD CAP SCREW |
| 16 | GB70-85 M5× 25 | SOCKET HEAD CAP SCREW |
| 17 | GB93-87 5 | SPRING WASHER |
| 18 | GB93-87 6 | SPRING WASHER |
| 19 | GB97.1-85 6 | WASHER |
| 20 | GB93-87 8 | SPRING WASHER |

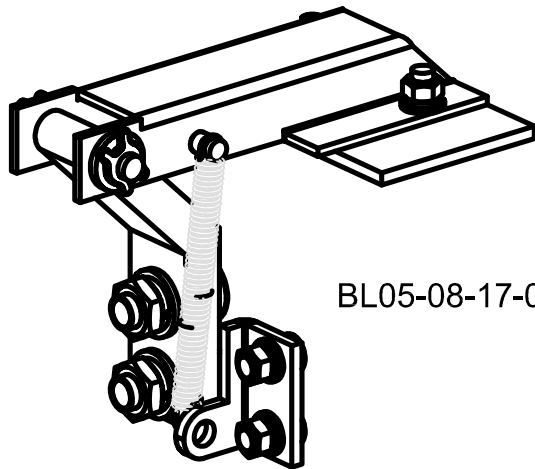


| ITEM | CATALOG | DESCRIPTION |
|------|---------------------|---------------------|
| 1 | BL05-08-17-05-01 | SPRING HOOK SUPPORT |
| 2 | BL05-08-17-05-02-00 | ADJUSTMENT WELDMENT |
| 3 | BL05-08-17-05-03 | BLOCK |
| 4 | BL05-08-17-05-04 | SPRING |
| 5 | BL05-08-17-05-05 | SCREW |
| 6 | BL05-08-17-05-06 | CONNECTING PANEL |
| 7 | GB5783-86 M6× 16 | HEX HEAD SCREW |
| 8 | GB6170-86 M6 | NUT |
| 9 | GB6170-86 M8 | NUT |
| 10 | GB6184-86 M6 | LOCK NUT |
| 11 | GB97.1-85 6 | WASHER |



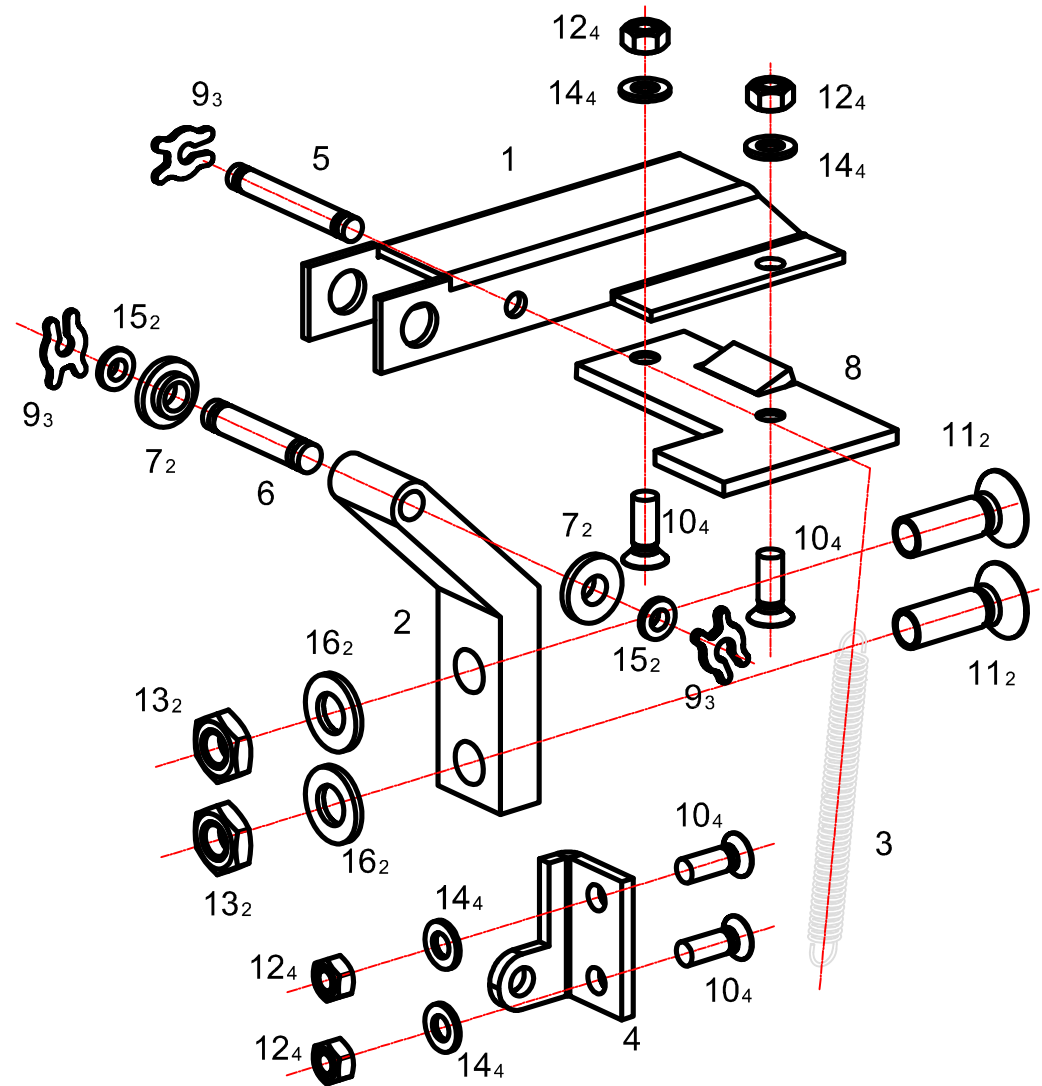
SPRING BRACKET ASSEMBLY BL05-08-17-05-00

| ITEM | CATALOG | DESCRIPTION |
|------|------------------|-----------------------|
| 1 | BL05-08-17-06-01 | LOCK WELDMENT |
| 2 | BL05-08-17-06-02 | LOCK WELDMENT SUPPORT |
| 3 | BL05-08-17-06-03 | SPRING |
| 4 | BL05-08-17-06-04 | SPRING HOOK |
| 5 | BL05-08-17-06-05 | SHAFT |
| 6 | BL05-08-17-06-06 | SHAFT |
| 7 | BL05-08-17-06-07 | WASHER |
| 8 | BL05-08-17-06-08 | LIMITED PANEL |
| 9 | BLB001-6 | "X" RING |
| 10 | GB2673-86 M5× 16 | FLAT SOCKET CAP SCREW |
| 11 | GB2673-86 M8× 25 | FLAT SOCKET CAP SCREW |
| 12 | GB6184-86 M5 | LOCKNUT |
| 13 | GB6184-86 M8 | LOCKNUT |
| 14 | GB97.1-85 5 | WASHER |

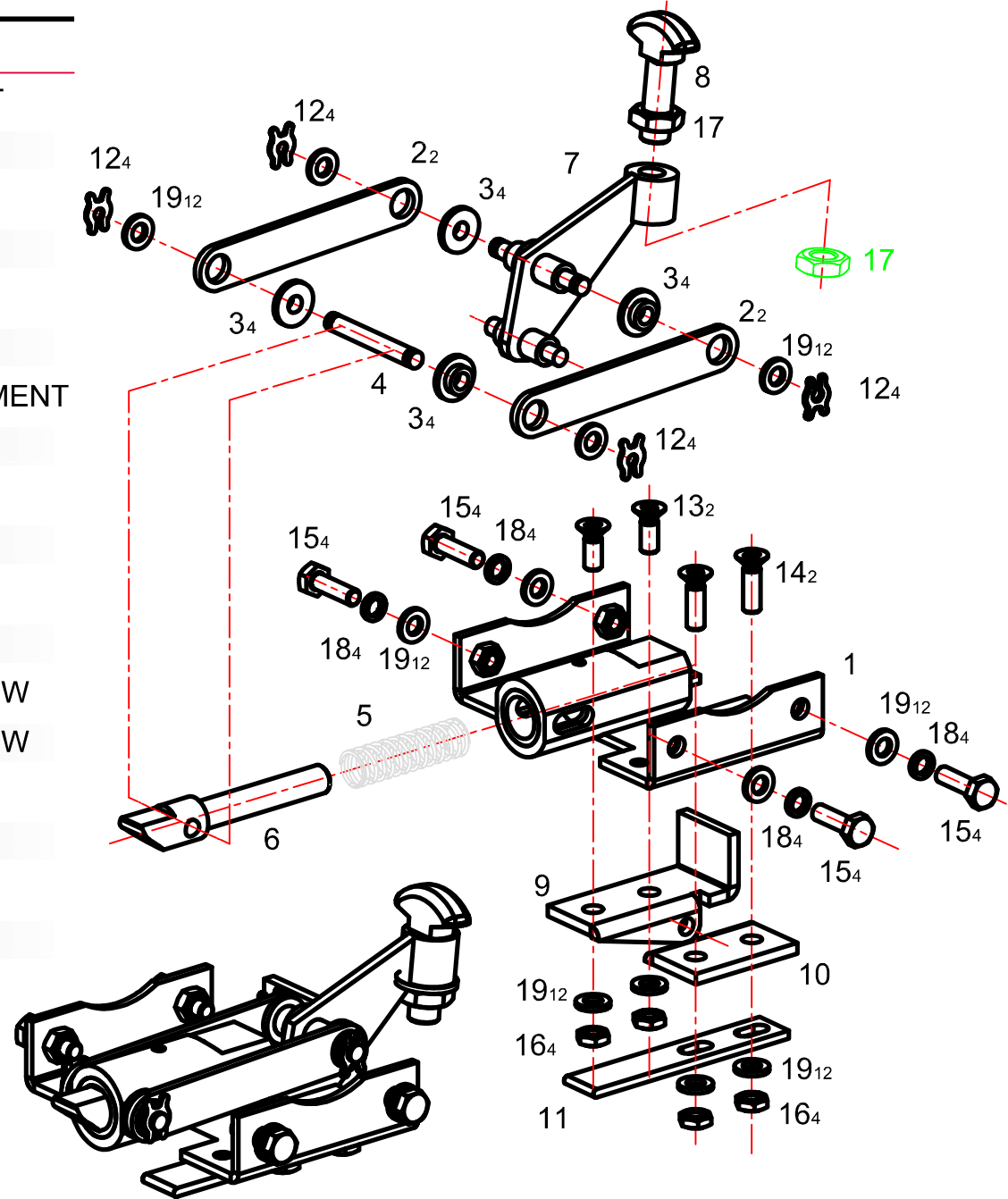


BL05-08-17-06-00

| ITEM | CATALOG | DESCRIPTION |
|------|-------------|-------------|
| 15 | GB97.1-85 6 | WASHER |
| 16 | GB97.1-85 8 | WASHER |

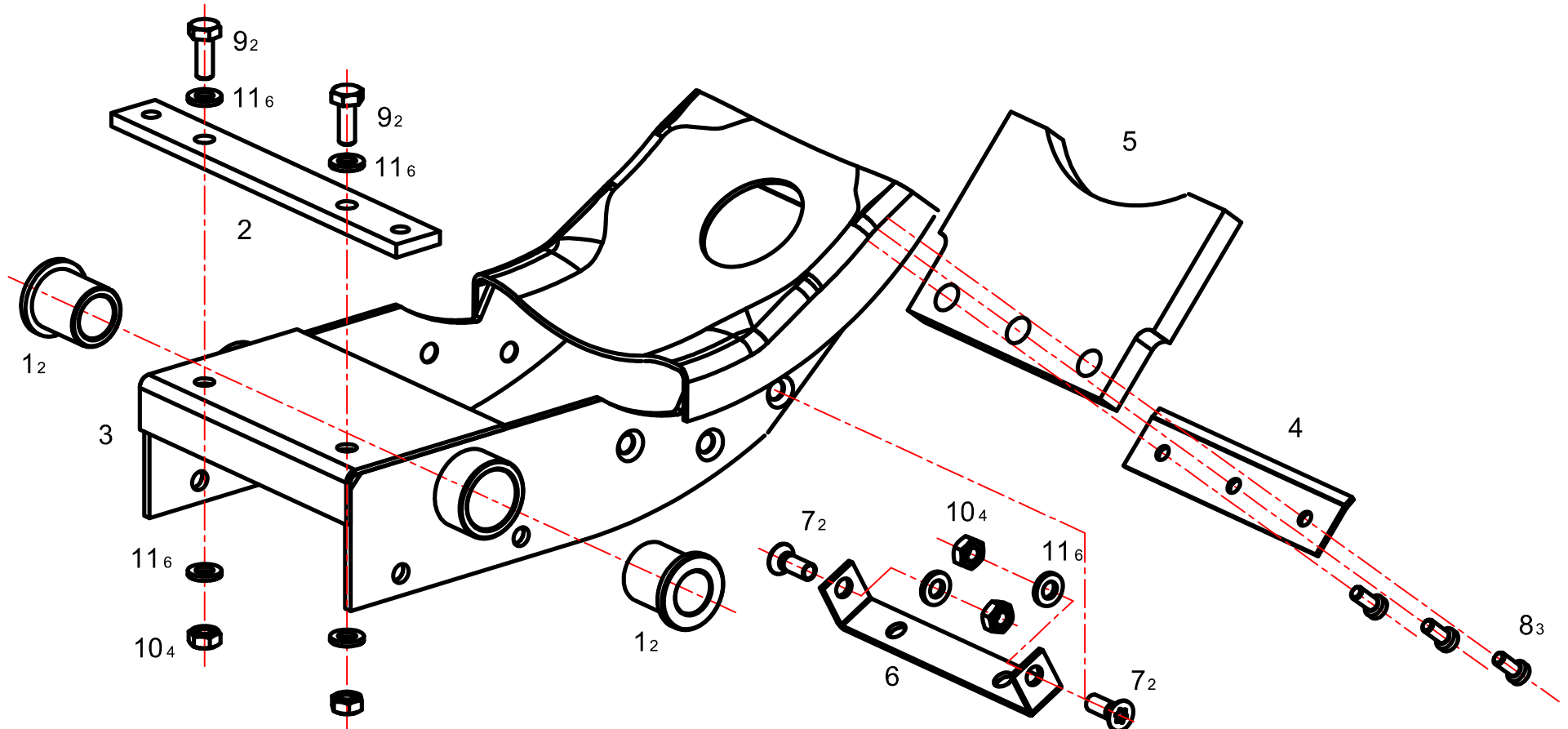


| ITEM | CATALOG | DESCRIPTION |
|------|---------------------|------------------------|
| 1 | BL05-08-17-07-01-00 | TRACK COVER SUPPORT |
| 2 | BL05-08-17-07-02 | CONNECTING LEVER |
| 3 | BL05-08-17-07-03 | WASHER |
| 4 | BL05-08-17-07-04 | SHAFT |
| 5 | BL05-08-17-07-05 | SPRING |
| 6 | BL05-08-17-07-06 | ROLL PIN |
| 7 | BL05-08-17-07-07-00 | BLOCK SUPPORT WELDMENT |
| 8 | BL05-08-17-07-08 | BLOCK |
| 9 | BL05-08-17-07-09 | SUPPORT WELDMENT I |
| 10 | BL05-08-17-07-10 | SUPPORT WELDMENT II |
| 11 | BL05-08-17-07-11 | LOWER PANEL |
| 12 | BLB001-6 | "X" RING |
| 13 | GB2673-86 M6× 12 | FLAT SOCKET CAP SCREW |
| 14 | GB2673-86 M6× 16 | FLAT SOCKET CAP SCREW |
| 15 | GB5783-86 M6× 20 | HEX HEAD SCREW |
| 16 | GB6184-85 M6 | LOCKNUT |
| 17 | GB6170-86 M10 | LOCKNUT |
| 18 | GB93-87 6 | WASHER |
| 19 | GB97.1-85 6 | WASHER |



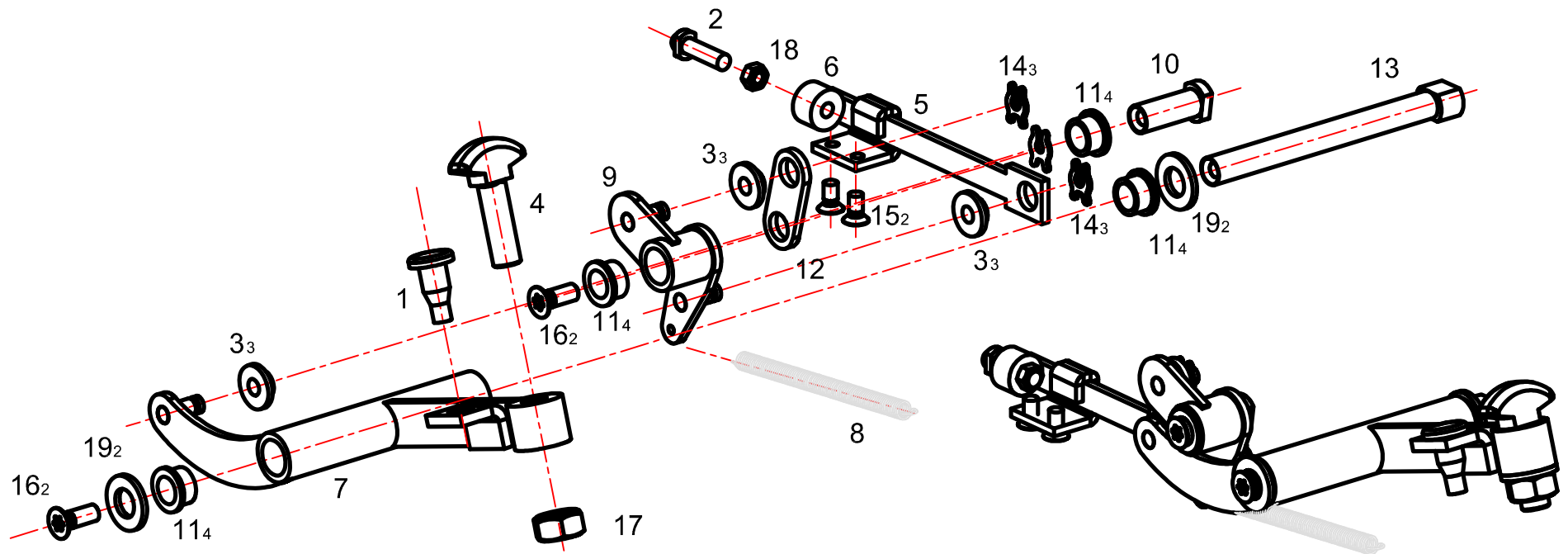
| ITEM | CATALOG | DESCRIPTION |
|------|---------------------|----------------------|
| 1 | BL02A-01-02-19 | FLANGE BEARING |
| 2 | BL05-08-17-08-01 | SPRING HOOK |
| 3 | BL05-08-17-08-02-00 | BALL HOLDER WELDMENT |
| 4 | BL05-08-17-08-03 | BAFFLE COVER |
| 5 | BL05-08-17-08-04 | BAFFLE |
| 6 | BL05-08-17-08-05 | LIMITED PANEL |

| ITEM | CATALOG | DESCRIPTION |
|------|------------------|-----------------------|
| 7 | GB2673-86 M6× 16 | FLAT SOCKET CAP SCREW |
| 8 | GB70-85 M5× 10 | SOCKET HEAD CAP SCREW |
| 9 | GB5783-86 M6× 16 | HEX HEAD SCREW |
| 10 | GB6184-86 M6 | LOCKNUT |
| 11 | GB97.1-85 6 | WASHER |

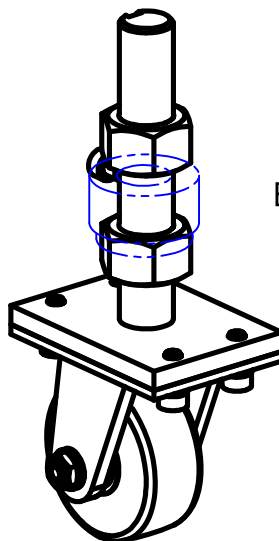


| ITEM | CATALOG | DESCRIPTION |
|------|---------------------|-----------------|
| 1 | BL02A-06-02-04 | WASHER |
| 2 | BL05-08-17-05-03 | BLOCK |
| 3 | BL05-08-17-07-03 | WASHER |
| 4 | BL05-08-17-07-08 | BUMPER BLOCK |
| 5 | BL05-08-17-09-01 | DIRECTION PANEL |
| 6 | BL05-08-17-09-02-00 | ROD |
| 7 | BL05-08-17-09-03-00 | ROD |
| 8 | BL05-08-17-09-04 | SPRING |
| 9 | BL05-08-17-09-05-00 | TRIANGLE PANEL |
| 10 | BL05-08-17-09-06 | SHAFT |

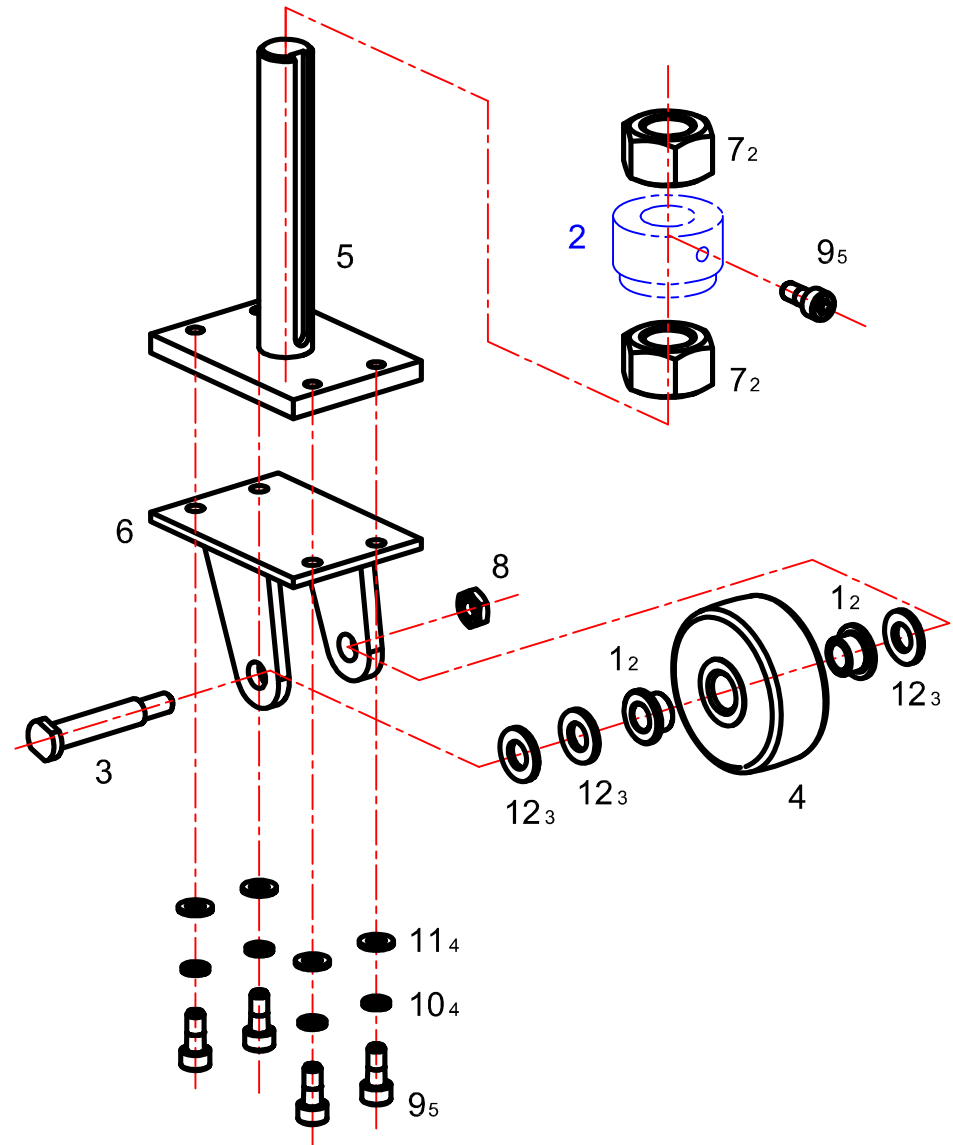
| ITEM | CATALOG | DESCRIPTION |
|------|------------------|-----------------------|
| 11 | BL05-08-17-09-07 | WASHER |
| 12 | BL05-08-17-09-08 | ROD |
| 13 | BL05-08-17-09-09 | SHAFT |
| 14 | BLB001-6 | "X" RING |
| 15 | GB2673-86 M5× 8 | FLAT SOCKET CAP SCREW |
| 16 | GB2673-86 M6× 12 | FLAT SOCKET CAP SCREW |
| 17 | GB6170-86 M10 | NUT |
| 18 | GB6170-86 M6 | NUT |
| 19 | GB97.1-85 10 | WASHER |



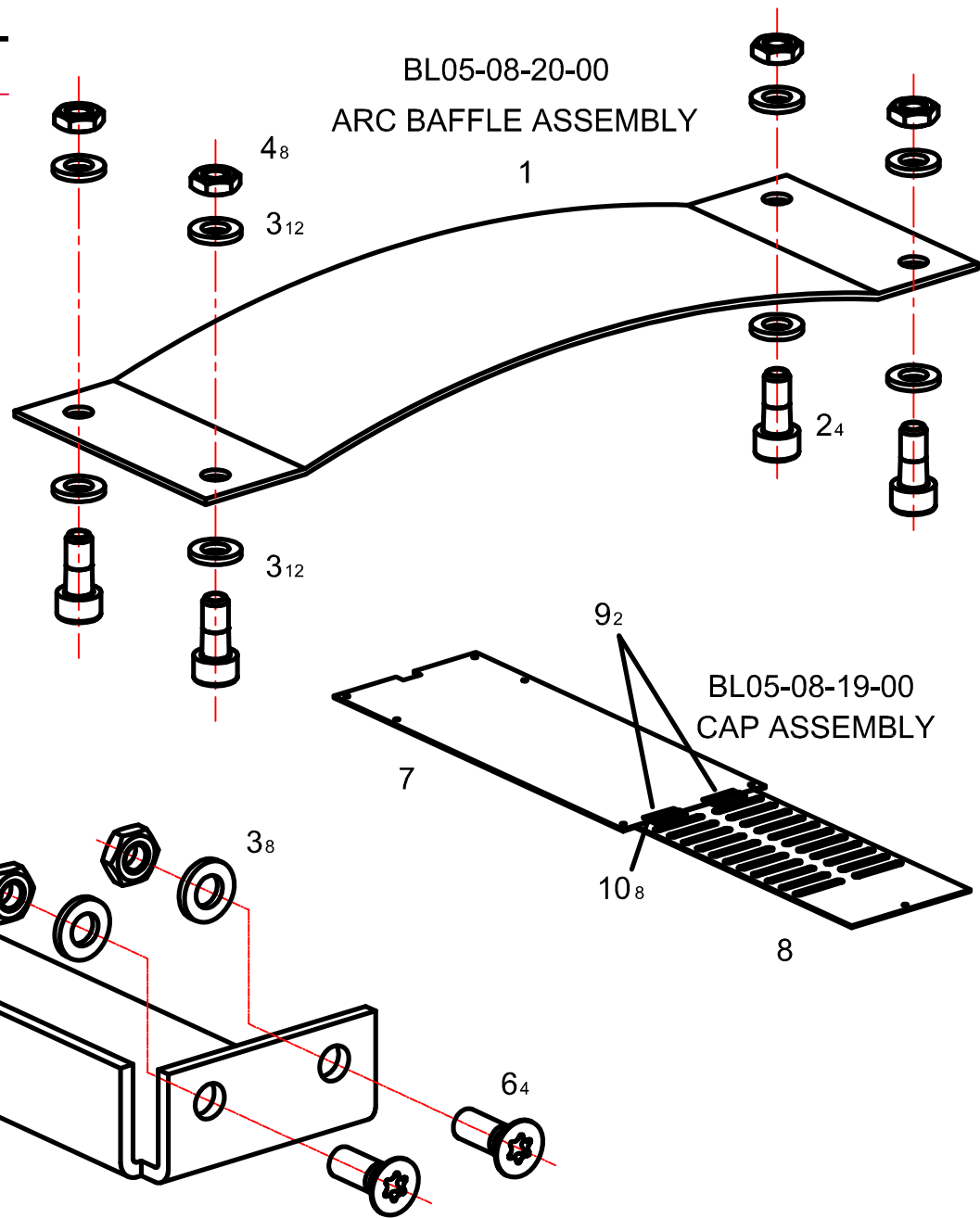
| ITEM | CATALOG | DESCRIPTION |
|------|------------------|----------------------------|
| 1 | BL03-04-25 | FLANGE BEARING |
| 2 | BL05-08-01-00A | FRAME WELDMENT |
| 3 | BL05-08-16-03 | SHAFT |
| 4 | BL05-08-16-06 | ROLLER |
| 5 | BL05-08-18-01-00 | ROLLER ADJUSTMENT WELDMENT |
| 6 | BL05-08-18-02 | ACTIVE ROLLER ARM |
| 7 | GB6170-85 M16 | NUT |
| 8 | GB6184-85 M6 | LOCKNUT |
| 9 | GB70-85 M5× 16 | SOCKET HEAD CAP SCREW |
| 10 | GB93-87 5 | WASHER |
| 11 | GB97.1-85 5 | WASHER |
| 12 | GB97.1-85 8 | WASHER |



BL05-08-18-00



| ITEM | CATALOG | DESCRIPTION |
|------|------------------|-----------------------|
| 1 | BL05-08-20-01 | ARC BAFFLE |
| 2 | GB5783-86 M6× 16 | HEX HEAD SCREW |
| 3 | GB97.1-85 6 | WASHER |
| 4 | GB6184-85 M6 | LOCKNUT |
| 5 | BL05-08-22-01 | STRENGTHEN PANEL |
| 6 | GB2673-86 M6× 16 | FLAT SOCKET CAP SCREW |
| 7 | BL05-08-19-01 | FIXED CAP |
| 8 | BL05-08-19-02 | ACTIVE CAP |
| 9 | GEMEL | 2" |
| 10 | GB12617 Φ4×16 | RIVET |

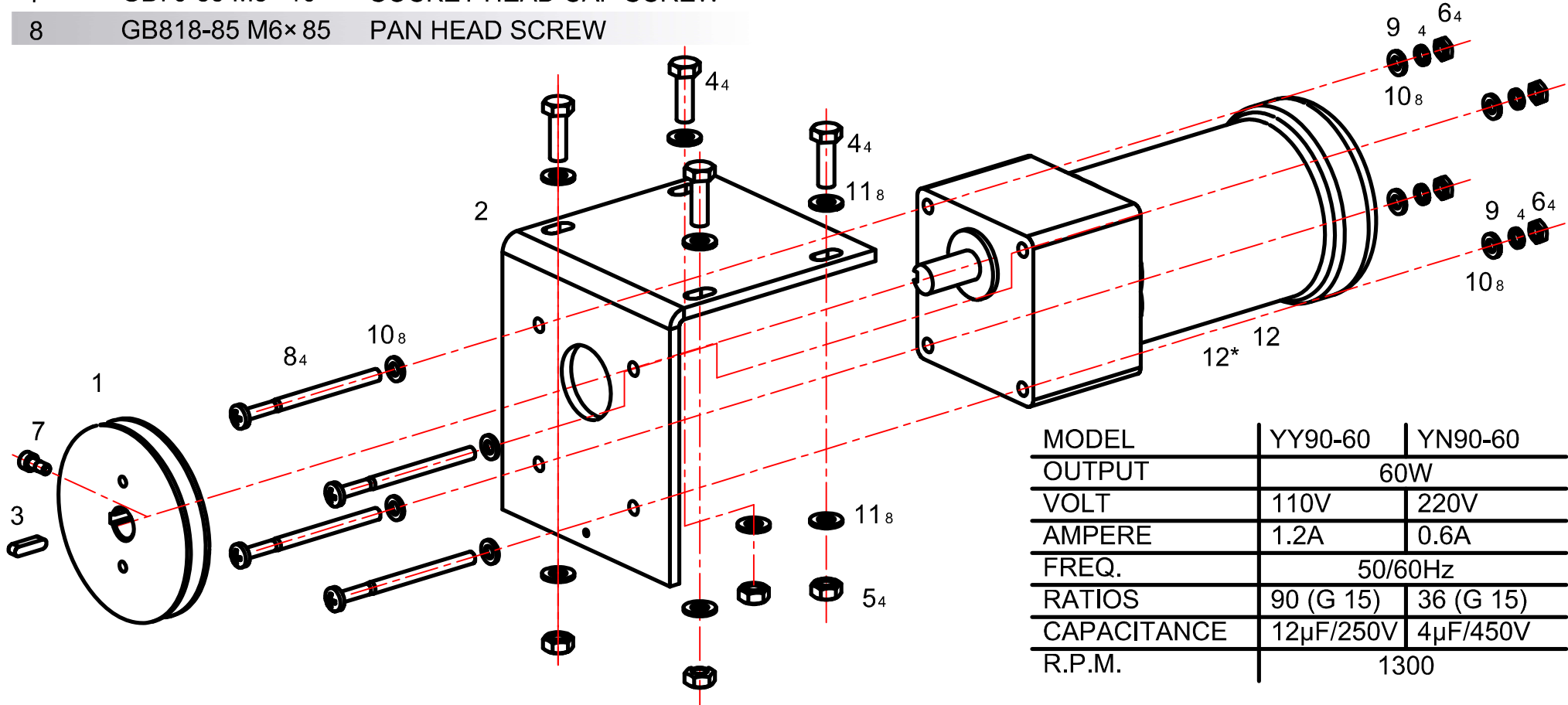


**CAP ASSEMBLY BL05-08-19-00 &
ARC BAFFLE ASSEMBLY BL05-08-20-00 &
STRENGTHEN PANEL ASSEMBLY BL05-08-22-00**



| ITEM | CATALOG | DESCRIPTION |
|------|-----------------|-----------------------|
| 1 | BL05-08-21-01A | BELT PULLEY |
| 2 | BL05-08-21-02 | MOTOR SUPPORT |
| 3 | GB1096-79 5×20 | KEY |
| 4 | GB5783-86 M8×25 | HEX HEAD SCREW |
| 5 | GB6184-86 M8 | LOCKNUT |
| 6 | GB6170-86 M6 | NUT |
| 7 | GB70-85 M5×10 | SOCKET HEAD CAP SCREW |
| 8 | GB818-85 M6×85 | PAN HEAD SCREW |

| ITEM | CATALOG | DESCRIPTION |
|------|-------------|----------------------------|
| 9 | GB93-87 6 | SPRING WASHER |
| 10 | GB97.1-85 6 | WASHER |
| 11 | GB97.1-85 8 | WASHER |
| 12 | YY90-60 | MOTO & GEAR BOX(110V/60Hz) |
| 12* | YN90-60 | MOTO & GEAR BOX(220V/50Hz) |



| MODEL | YY90-60 | YN90-60 |
|-------------|-----------------|----------------|
| OUTPUT | 60W | |
| VOLT | 110V | 220V |
| AMPERE | 1.2A | 0.6A |
| FREQ. | 50/60Hz | |
| RATIOS | 90 (G 15) | 36 (G 15) |
| CAPACITANCE | 12 μ F/250V | 4 μ F/450V |
| R.P.M. | 1300 | |

| CATALOG | PAGE | CATALOG | PAGE | CATALOG | PAGE | CATALOG | PAGE |
|-------------------|------|---------------------|-------|-------------------|------|---------------------|-------|
| BL02A-01-02-19 | 19 | BL02A-08-18-36 | 4 | BL05-08-05-09 | 8 | BL05-08-15-03-00 | 13 |
| BL02A-06-02-04 | 20 | BL03-04-25 | 14,21 | BL05-08-06A-00 | 2 | BL05-08-15-04 | 13 |
| BL02A-08-17-13 | 4 | BL03-08-18-02-00 | 4 | BL05-08-06A-01-00 | 9 | BL05-08-15-05 | 13 |
| BL02A-08-18-03 | 4 | BL03-08-18-06 | 4 | BL05-08-06-02 | 9 | BL05-08-16-00 | 2 |
| BL02A-08-18-04 | 4 | BL03-08-18-19 | 4 | BL05-08-06-03 | 9 | BL05-08-16-01 | 14 |
| BL02A-08-18-08 | 4 | BL03-08-18-35 | 4 | BL05-08-06-04 | 9 | BL05-08-16-02 | 14 |
| BL02A-08-18-09 | 4 | BL05-08-01-00A | 2 | BL05-08-06-05 | 9 | BL05-08-16-03 | 14,21 |
| BL02A-08-18-10-00 | 4 | BL05-08-02-00A | 2 | BL05-08-06-06 | 9 | BL05-08-16-04 | 14 |
| BL02A-08-18-11 | 4 | BL05-08-02-00B | 2 | BL05-08-06-07 | 9,11 | BL05-08-16-05 | 14 |
| BL02A-08-18-12 | 4 | BL05-08-03-00A | 2 | BL05-08-06-08 | 9 | BL05-08-16-06 | 14,21 |
| BL02A-08-18-13 | 4 | BL05-08-03-01 | 4 | BL05-08-10-00 | 2,10 | BL05-08-17-00 | 2 |
| BL02A-08-18-14 | 4 | BL05-08-03-05A | 4 | BL05-08-10-01 | 10 | BL05-08-17-01-00 | 15 |
| BL02A-08-18-15-00 | 4 | BL05-08-03-26 | 4 | BL05-08-10-01 | 10 | BL05-08-17-02 | 15 |
| BL02A-08-18-16 | 4 | BL05-08-04A-00 | 2 | BL05-08-11-00 | 2 | BL05-08-17-03 | 15 |
| BL02A-08-18-17 | 4 | BL05-08-04A-01-00 | 6 | BL05-08-11-01 | 11 | BL05-08-17-04 | 15 |
| BL02A-08-18-18 | 4 | BL05-08-04A-02-00 | 6 | BL05-08-11-02 | 11 | BL05-08-17-05-00 | 15 |
| BL02A-08-18-20 | 4 | BL05-08-04A-03 | 6 | BL05-08-11-03-00 | 11 | BL05-08-17-05-01 | 16 |
| BL02A-08-18-21 | 4 | BL05-08-04A-04 | 6 | BL05-08-11-05 | 11 | BL05-08-17-05-02-00 | 16 |
| BL02A-08-18-22 | 4 | BL05-08-04A-05-00 | 6 | BL05-08-11-06 | 11 | BL05-08-17-05-03 | 16,20 |
| BL02A-08-18-24 | 4 | BL05-08-05-00 | 2 | BL05-08-12-00 | 2 | BL05-08-17-05-04 | 16 |
| BL02A-08-18-25 | 4 | BL05-08-05-01-01-00 | 8 | BL05-08-13-00 | 2,12 | BL05-08-17-05-05 | 16 |
| BL02A-08-18-27 | 4 | BL05-08-05-01-02 | 8 | BL05-08-13-01 | 12 | BL05-08-17-05-06 | 16 |
| BL02A-08-18-28-00 | 4 | BL05-08-05-01-03 | 8 | BL05-08-13-02 | 12 | | |
| BL02A-08-18-29 | 4 | BL05-08-05-02 | 8 | BL05-08-13-03 | 12 | | |
| BL02A-08-18-30 | 4 | BL05-08-05-03 | 8 | BL05-08-14-00 | 2,12 | | |
| BL02A-08-18-31 | 4 | BL05-08-05-05 | 8 | BL05-08-14-01 | 12 | | |
| BL02A-08-18-33 | 4 | BL05-08-05-06 | 8 | BL05-08-15-00 | 2 | | |
| BL02A-08-18-34 | 4 | BL05-08-05-07 | 8 | BL05-08-15-01 | 13 | | |
| | | | | BL05-08-15-02 | 13 | | |



| CATALOG | PAGE | CATALOG | PAGE | CATALOG | PAGE | CATALOG | PAGE |
|---------------------|-------|---------------------|--------------|--------------------|-----------------|-------------------|---------------------------------------|
| BL05-08-17-06-00 | 15 | BL05-08-17-09-01 | 20 | GB1096-79 5× 20 | 23 | GB5783-86 M8× 25 | 2,4,23 |
| BL05-08-17-06-01 | 17 | BL05-08-17-09-02-00 | 20 | GB1096-79 5× 25 | 10 | GB5783-86 M10× 20 | 2 |
| BL05-08-17-06-02 | 17 | BL05-08-17-09-03-00 | 20 | GB1096-79 5X28 | 6 | GB5783-86 M10× 25 | 4,6 |
| BL05-08-17-06-03 | 17 | BL05-08-17-09-04 | 20 | GB11544-89 A50" | 2 | GB5783-86 M10× 35 | 4 |
| BL05-08-17-06-04 | 17 | BL05-08-17-09-05-00 | 20 | GB11544-89 Z49" | 2 | GB6170-86 M6 | 16,20,23 |
| BL05-08-17-06-05 | 17 | BL05-08-17-09-06 | 20 | GB12617 Φ4×16 | 22 | GB6170-86 M8 | 15,16 |
| BL05-08-17-06-06 | 17 | BL05-08-17-09-07 | 20 | GB2673-86 M5× 8 | 20 | GB6170-86 M10 | 2,4,18, 20 |
| BL05-08-17-06-07 | 17 | BL05-08-17-09-08 | 20 | GB2673-86 M5× 16 | 17 | GB6170-86 M12 | 4,8 |
| BL05-08-17-06-08 | 17 | BL05-08-17-09-09 | 20 | GB2673-86 M6× 12 | 18,20 | GB6170-86 M16 | 21 |
| BL05-08-17-07-00 | 15 | BL05-08-17-10-00 | 15 | GB2673-86 M6× 16 | 15,19, 22 | GB6170-86 M20 | 8 |
| BL05-08-17-07-01-00 | 18 | BL05-08-18-00 | 2 | GB2673-86 M6× 20 | 18 | GB6184-86 M5 | 17 |
| BL05-08-17-07-02 | 18 | BL05-08-18-01-00 | 21 | GB2673-86 M6× 35 | 11 | GB6184-86 M6 | 4,11,14, 15,16, 18,19, 21,23 |
| BL05-08-17-07-03 | 18,20 | BL05-08-18-02 | 21 | GB2673-86 M8× 20 | 2,6,9,13 | GB6184-86 M8 | 2,4,6, 9,11,17, 23 |
| BL05-08-17-07-04 | 18 | BL05-08-19-00 | 2 | GB2673-86 M8× 25 | 17 | GB6184-86 M10 | 4,9,11, 14 |
| BL05-08-17-07-05 | 18 | BL05-08-19-01 | 22 | GB278-82 620ZZ | 9,11 | GB70-85 M5× 10 | 19,23 |
| BL05-08-17-07-06 | 18 | BL05-08-19-02 | 22 | GB5782-86 M8× 60 | 4 | GB70-85 M5× 16 | 21 |
| BL05-08-17-07-07-00 | 18 | BL05-08-20-00 | 2 | GB5782-86 M8× 140 | 4 | GB70-85 M5× 20 | 15 |
| BL05-08-17-07-08 | 18,20 | BL05-08-20-01 | 22 | GB5782-86 M10× 50 | 2 | GB70-85 M5× 25 | 15 |
| BL05-08-17-07-09 | 18 | BL05-08-21-00A | 2 | GB5782-86 M10× 80 | 14 | GB77-85 M5× 16 | 10 |
| BL05-08-17-07-10 | 18 | BL05-08-21-01A | 23 | GB5782-86 M10× 240 | 4 | GB77-85 M6× 12 | 6 |
| BL05-08-17-07-11 | 18 | BL05-08-21-02 | 23 | GB5783-86 M6× 16 | 16,18, 19,22 | GB77-85 M8× 10 | 6 |
| BL05-08-17-08-00 | 15 | BL05-08-22-00 | 2 | GB5783-86 M6× 20 | 4,13 | | |
| BL05-08-17-08-01 | 19 | BL05-08-22-01 | 22 | GB5783-86 M8× 16 | 12 | | |
| BL05-08-17-08-02-00 | 19 | BL05-08-23-00 | 2 | GB5783-86 M8× 20 | 11 | | |
| BL05-08-17-08-03 | 19 | BL05-08-24-00A | 2 | | | | |
| BL05-08-17-08-04 | 19 | BLB001-6 | 17,18, 20 | | | | |
| BL05-08-17-08-05 | 19 | CF10K | 4 | | | | |
| BL05-08-17-09-00 | 15 | | | | | | |

| CATALOG | PAGE |
|---------|------|
|---------|------|

| CATALOG | PAGE |
|---------|------|
|---------|------|

| CATALOG | PAGE |
|---------|------|
|---------|------|

| CATALOG | PAGE |
|---------|------|
|---------|------|

| | |
|---------------------|--|
| GB810-88 M30× 1.5 8 | |
| GB818-85 M6× 85 | 23 |
| GB823-88 M4× 12 | 2 |
| GB848-85 4 | 2 |
| GB858-88 30 | 8 |
| GB879-86 Φ5×50 | 12 |
| GB879-86 Φ6×20 | 4 |
| GB893.1-86 35 | 9,11 |
| GB893.1-86 80 | 8 |
| GB894.1-86 8 | 4 |
| GB894.1-86 12 | 4 |
| GB894.1-86 14 | 11 |
| GB894.1-86 45 | 8 |
| GB91-86 Φ3.2×25 | 14 |
| GB93-87 4 | 2 |
| GB93-87 5 | 15,21 |
| GB93-87 6 | 13,15, 18,23 |
| GB93-87 8 | 6,9,12,15 |
| GB93-87 10 | 2,6,9 |
| GB96-85 6 | 13 |
| GB97.1-85 5 | 17,21 |
| GB97.1-85 6 | 4,11,14, 15,16,17, 18,19,22, 23 |
| GB97.1-85 8 | 2,4,6,,9, 11,12,15, |

| | |
|--------------|----------------------|
| GB97.1-85 8 | 17,21,23 |
| GB97.1-85 10 | 2,4,6,9, 11,14,20 |
| GB97.1-85 12 | 4 |
| GB97.1-85 16 | 14 |
| GEMEL | 22 |
| PA203 | 6 |
| SI10F | 4 |
| SSH-0554-1 | 10 |
| SSH-0554-2 | 10 |
| YN90-60 | 23 |
| YY90-60 | 23 |
| Φ21XΦ8.5X2 | 4 |





VIA BOWLING POLAND

